



www.hipas.com.tr



www.aboxplast.com



Kasa, Konteyner ve Palet Katalođu
Crates, Container and Pallet Catalogue

Biz kimiz

Who are we

1979'dan bu yana Hi-Paş Plastik, sanayi sektörünün temel ihtiyaçlarını güvenilir ve yenilikçi plastik çözümleriyle karşılamaktadır. Aile şirketi kimliğimiz, nesiller boyunca aktarılan değerlerimiz ve uzun vadeli iş birliği anlayışımızla güçlenmiştir. Bugün, Türkiye genelinde 60'tan fazla bayi ağıımız ve 50'den fazla ülkeye ulaşan ihracatımızla sektörde güçlü bir konumdayız. Sürdürülebilirlik, insan odaklılık ve operasyonel mükemmeliyet ilkelerimiz doğrultusunda yüksek kaliteli, güvenilir ve geleceğe değer katan çözümler sunmaya devam ediyoruz.

Since 1979, Hi-Paş Plastik has been addressing the essential needs of the industrial sector with reliable and innovative plastic solutions. As a family-owned business, we are strengthened by values passed down through generations and a commitment to long-term partnerships. Today, with a nationwide network of over 60 dealers and exports to more than 50 countries, we stand as a trusted player in our industry. Guided by sustainability, human-centric values, and operational excellence, we remain dedicated to delivering high-quality, reliable, and future-focused solutions that create lasting value.

45+

Yılı aşkın tecrübe
Years of operations

55+

Servis sağladığımız ülke
Countries of operation

75.000+

Mutlu müşteri
Happy clients

200+

Çalışan
Employees

Sürdürülebilirlik

Sustainability

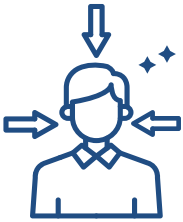


Dayanıklı, yeniden kullanılabilir ve geri dönüştürülebilir plastik çözümler üreterek çevresel etkimizi en aza indiriyoruz. Otomatik ve hibrit enjeksiyon makinelerimizle verimli ve hassas üretim sağlıyoruz. Güneş enerjili tesisimiz ve tamamen elektrikli forklift filomuzla enerji verimliliğini artırıyor, ISO 14001 çevre standartlarına bağlılığımızı sürdürüyoruz.

We minimize our environmental impact by producing durable, reusable, and recyclable plastic solutions. Our automated and hybrid injection molding machines ensure efficient and precise production. With our solar-powered facility and fully electric forklift fleet, we boost energy efficiency and uphold ISO 14001 environmental standards.

İnsan odaklı yaklaşım

Human-centred

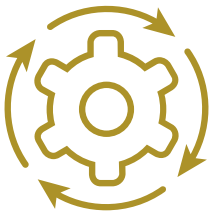


Aile şirketi olarak insanı; ekibimizde, iş ortaklarımızda ve ürünlerimizde önceliklendiriyoruz. 2000'den fazla üründen oluşan portföyümüzle, ergonomi, güvenlik ve verimliliği esas alarak tasarlanan endüstriyel plastik çözümler için tek adres olarak hizmet veriyoruz. Kültürümüz ise güven, empati ve uzun vadeli iş birliğine dayanmaktadır.

As a family-owned company, we put people first in our team, partnerships, and products. With a portfolio of over 2000 items, we serve as a one-stop shop for industrial plastic solutions, always designed with ergonomics, safety, and efficiency in mind. Our culture is rooted in trust, empathy, and long-term collaboration.

Operasyonel Mükemmeliyet

Operational Excellency



25.000 m² kapalı alana sahip modern tesisimizde yüksek kapasiteli ve yüksek hassasiyetli üretim gerçekleştiriyoruz. ISO 9001, ISO 14001, ISO 22000, ISO 10002, ISO 45001, OHSAS 18001, TSE ve tam gıda güvenliği uygunluğu sertifikalarına sahip olarak, sektörler ve küresel pazarlar genelinde güvenilirlik ve mükemmellik garanti ediyoruz.

Our 25,000 m² modern facility delivers high-capacity, high-precision production. Certified with ISO 9001, ISO 14001, ISO 22000, ISO 10002, ISO 45001, OHSAS 18001, TSE, and full food safety compliance, we guarantee reliability and excellence across industries and global markets.

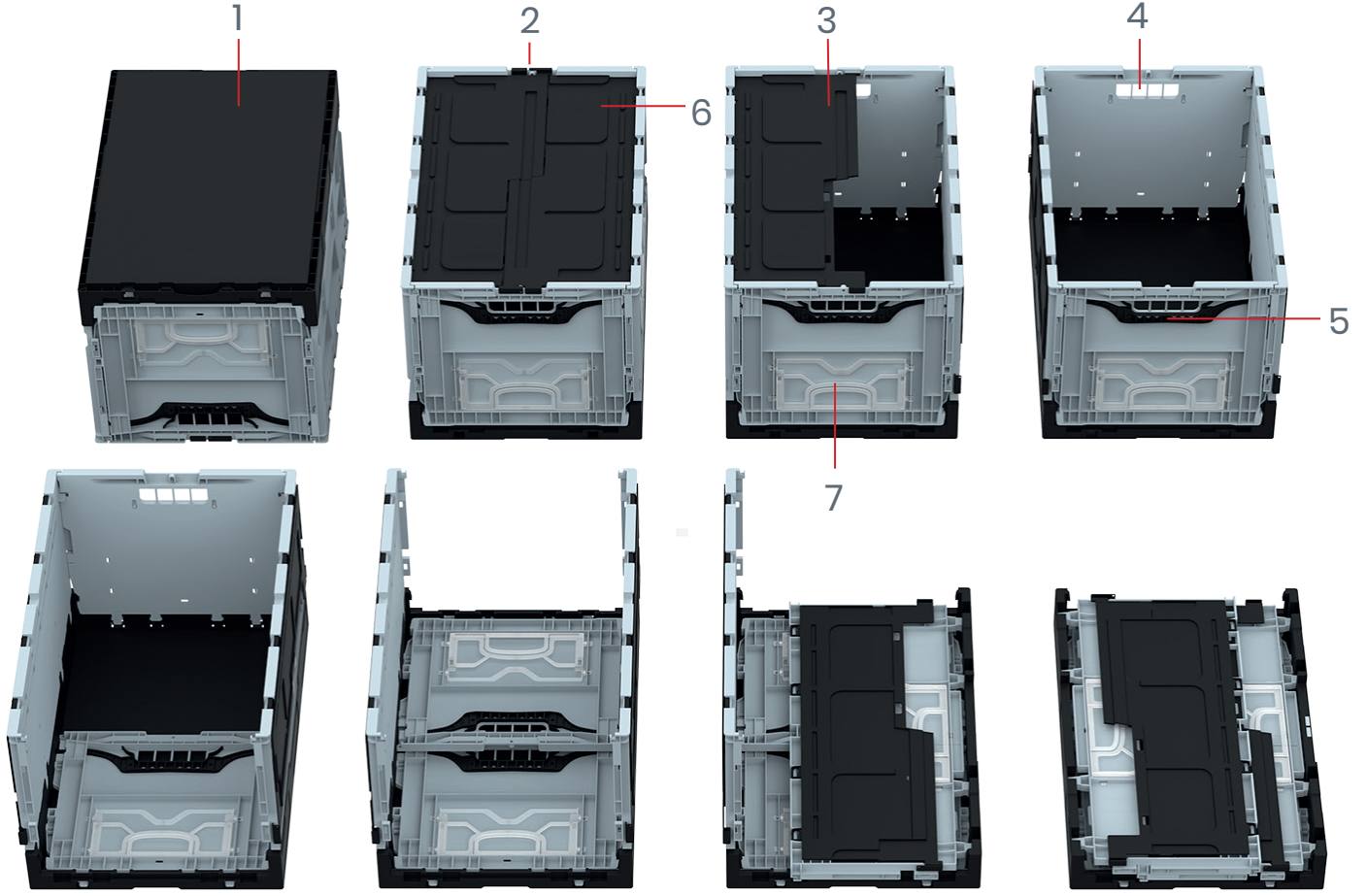
Sayfa Dizini

Table of Contents

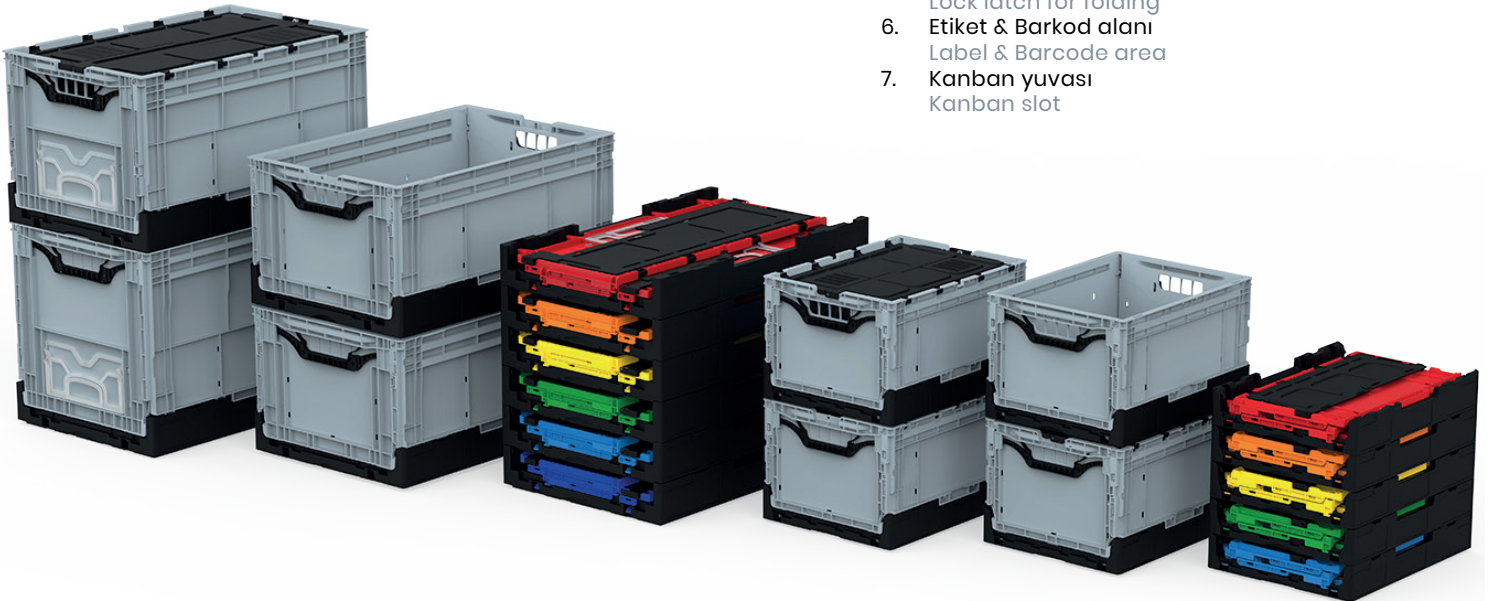
KATLANIR KAPAKLI KASALAR FOLDING LID CRATES	4-5
KAPAKLI KONİK KASALAR ALC ATTACHED LID CRATES	6-7
400 X 600 MM ENDÜSTRİYEL KASALAR 400 X 600 MM INDUSTRIAL CRATES	8-9
R-KLT & RL-KLT KASALAR R-KLT & RL-KLT CRATES	10-11
400 X 600 MM KAPALI KASALAR 400 X 600 MM SOLID CRATES	12-13
400 X 600 MM DELİKLİ KASALAR 400 X 600 MM PERFORATED CRATES	14-15
400 X 600 MM KAPALI ÖNÜ AÇIK KASALAR 400 X 600 MM PERFORATED CRATES	16
400 X 600 MM DELİKLİ ÖNÜ AÇIK KASALAR 400 X 600 MM PERFORATED OPEN FRONT CRATES	17
400 X 600 MM SANAYİ KASALARI 400 X 600 MM INDUSTRIAL CRATES	18
AKSESUARLAR ACCESORIES	19
480 X 690 MM KASALAR 480 X 690 MM CRATES	20
400 X 800 MM & 400 X 1200 MM KASALAR 400 X 800 MM & 400 X 1200 MM CRATES	21
200 X 300 MM & 300 X 400 MM KASALAR 200 X 300 MM & 300 X 400 MM CRATES	22-23
300 X 500 MM KASALAR 300 X 500 MM INDUSTRIAL CRATES	24
KAPAKLI KONİK KASALAR NESTABLE AND ALC CRATES	25
PLASTİK KASALAR PLASTIC CRATES	26
KATLANIR DELİKLİ KASALAR FOLDING PERFORATED CRATES	27
600 X 800 MM & 600 X 800 MM PALETLER 600 X 800 MM & 600 X 800 MM PALLETS	28-29
KAPALI KONTEYNERLER CLOSED CONTAINERS	30-32
DELİKLİ KONTEYNERLER PERFORATED CONTAINERS	33
KATLANIR KONTEYNERLER FOLDING CONTAINERS	34-35
TEKYÖN PALETLER ONE-WAY PALLETS	36-39
600 X 800 MM & 600 X 800 MM PALETLER 600 X 800 MM & 600 X 800 MM PALLETS	40
PLASTİK PALETLER PLASTIC PALLETS	41
PROFİL YUVALI PALETLER PROFILE SLOT PALLETS	42
PLASTİK PALETLER PLASTIC PALLETS	43
KİMYASAL DÖKÜNTÜ PALETİ SPILL PALLET	44
ÇÖP KOVALARI WASTE BINS	45-46
SIFIR ATIK GERİ DÖNÜŞÜM KOVALARI ZERO WASTE RECYCLING BINS	47

KATLANIR KAPAKLI KASALAR

FOLDING CRATES



1. Düz Taban
Flat Base
2. Mühür takılabilir
Seal can be attached
3. Menteşeli kapak
Attached lid
4. El tutma yeri açık yada kapalı üretilbilir
Hand grip can be produced open or closed
5. Katlanabilmesi için kilit mandalı
Lock latch for folding
6. Etiket & Barkod alanı
Label & Barcode area
7. Kanban yuvası
Kanban slot



KATLANIR KAPAKLI KASALAR

FOLDING CRATES



KX-4640



KX-4634



KX-4628



KX-4623



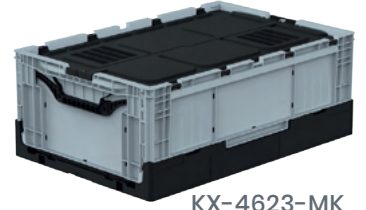
KX-4640-MK



KX-4634-MK



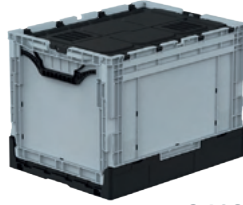
KX-4628-MK



KX-4623-MK



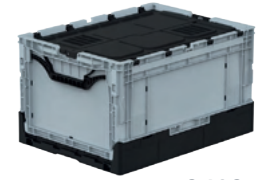
KX-3429



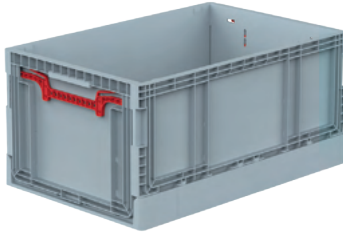
KX-3429-MK



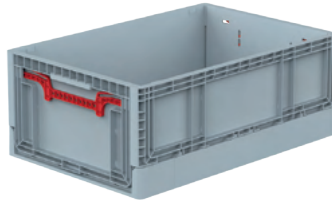
KX-3423



KX-3423-MK



KX-4629



KX-4622



KX-KANBAN

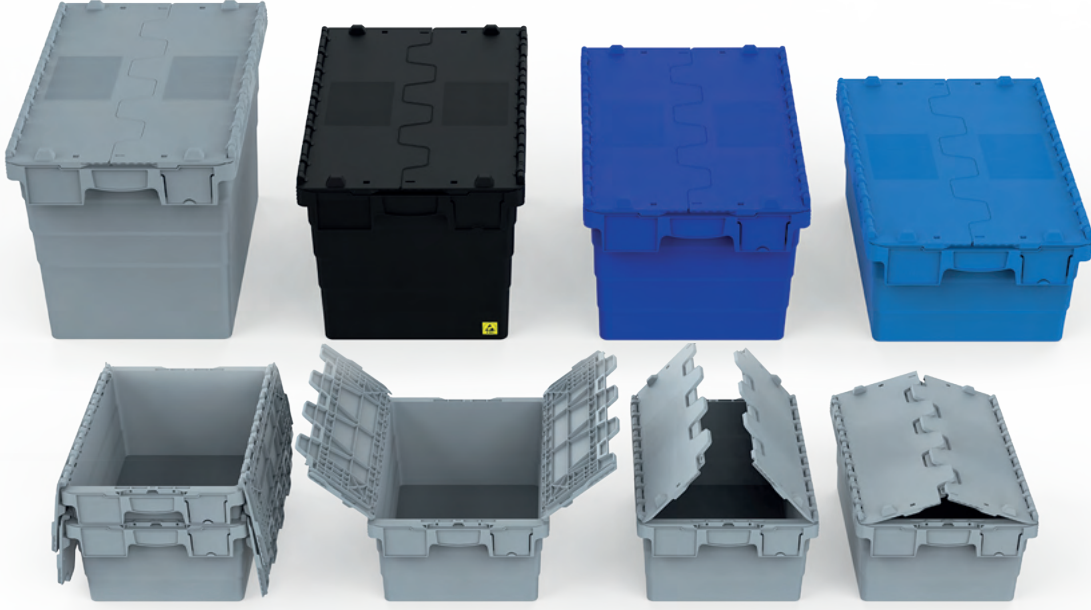


DOLLY 4262

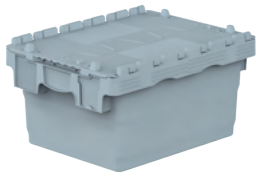
ÜRÜN KODU PRODUCT CODE	DIŞ ÖLÇÜ EXTERNAL DIMENSIONS		İÇ ÖLÇÜ INTERNAL DIMENSIONS		KATLANMIŞ YÜKSEKLİK FOLDED HEIGHT	PALET ADET PALLET QTY 100x120	40HC ADET 40HC QTY	TIR ADET TRUCK QTY	ORJİNAL ORIGINAL	GERİ DÖNÜŞÜM RECYCLE	ESD			
	Yük / H	Yük / H	Yük / H	Yük / H										
KX-4640	400 x 600	400 mm	355 x 550	395 mm	85 mm	150	3300	3900						
KX-4640-MK		400 mm		375 mm										
KX-4634		340 mm		335 mm										
KX-4634-MK		340 mm		315 mm										
KX-4628		290 mm		285 mm										
KX-4628-MK		290 mm		275 mm										
KX-4623		230 mm		225 mm	73 mm									
KX-4623-MK		230 mm		215 mm										
KX-4629		290 mm		280 mm										
KX-4622		230 mm		220 mm										
KX-3429	300 x 400	290 mm	260 x 355	285 mm	85 mm	300	6600	7800						
KX-3429-MK		290 mm		275 mm										
KX-3423		230 mm		225 mm										
KX-3423-MK		230 mm		215 mm										
Dolly-4262	400 x 600 x 190 mm													
KX-KANBAN	225 x 100 mm													

KAPAKLI KONİK KASALAR

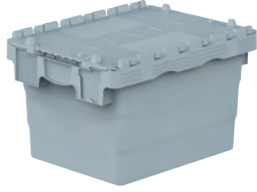
ALC ATTACHED LID CRATES



300 X 400 MM



HP-4321-MK



HP-4325-MK



HP-4332-MK



HP-4336-MK

300 X 400 MM ESD



HP-4321-MK-ESD



HP-4325-MK-ESD



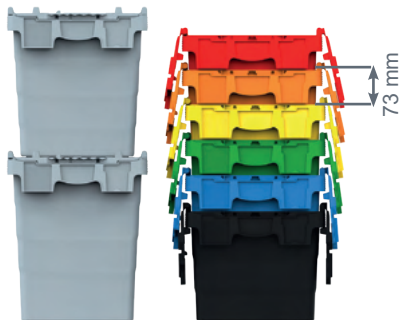
HP-4332-MK-ESD



HP-4336-MK-ESD

ÜRÜN KODU PRODUCT CODE	ESD	DIŞ ÖLÇÜ EXTERNAL DIMENSIONS		İÇ ÖLÇÜ INTERNAL DIMENSIONS		PALET ADET PALLET QTY 100x120	40HC ADET 40HC QTY	TIR ADET TRUCK QTY	ORJİNAL ORIGINAL	GERİ DÖNÜŞÜM RECYCLE			
		Yük / H	Yük / H	Yük / H	Yük / H								
HP-4321-MK	-ESD	300 x 400	210 mm	265 x 340	190 mm	270	5940	7020					
HP-4325-MK	-ESD		250 mm		230 mm						270	5940	7020
HP-4332-MK	-ESD		320 mm		300 mm						261	5742	6786
HP-4336-MK	-ESD		365 mm		345 mm						252	5544	6552

300 x 400 mm İç içe İstifleme Yükseklik
300 x 400 mm Nesting height



Plastik Kelepçe Takılabilir.
Plastic cable tie can be applied



KAPAKLI KONİK KASALAR

ALC ATTACHED LID CRATES

400 X 600 MM



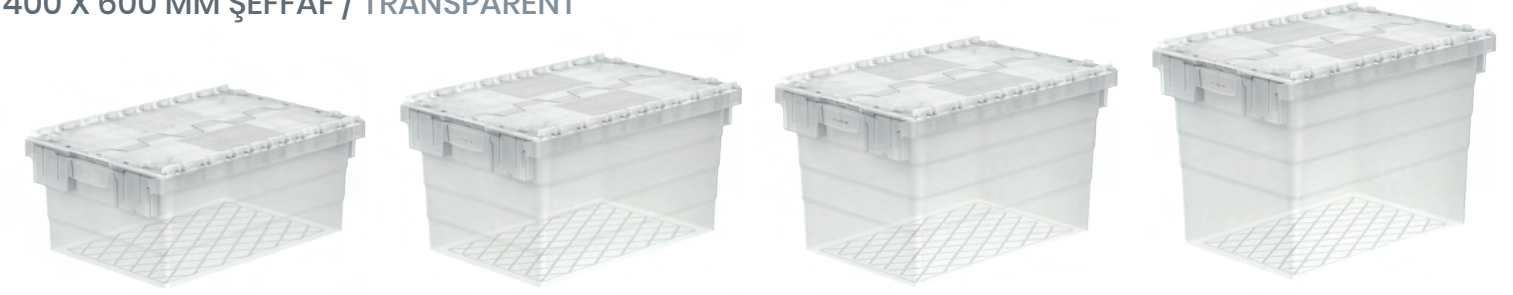
HP-6425-MK

HP-6432-MK

HP-6435-MK

HP-6440-MK

400 X 600 MM ŞEFFAF / TRANSPARENT



HP-6425-MK-SF

HP-6432-MK-SF

HP-6435-SF

HP-6440-MK-SF

400 X 600 MM ESD






HP-6425-MK-ESD

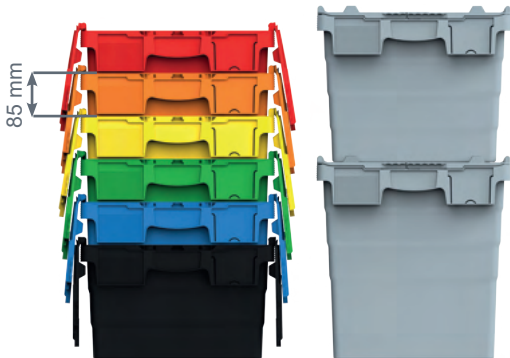
HP-6432-MK-ESD

HP-6435-MK-ESD

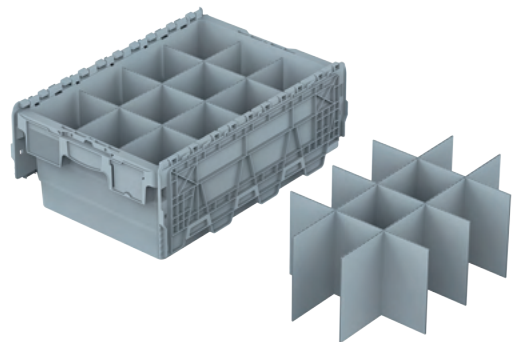
HP-6440-MK-ESD

ÜRÜN KODU PRODUCT CODE	ŞEFFAF TRANSPARENT		DIŞ ÖLÇÜ EXTERNAL DIMENSIONS	İÇ ÖLÇÜ INTERNAL DIMENSIONS	PALET ADET PALLET QTY	40HC ADET 40HC QTY	TIR ADET TRUCK QTY	ORJ ORG	GERİ DÖN. RECYCLE		
HP-6425-MK	-SF	-ESD	400 x 600	Yük / H 250 mm	365 x 545	Yük / H 232 mm	100	2200	2600		
HP-6432-MK	-SF	-ESD		320 mm		302 mm					
HP-6435-MK	-SF	-ESD		360 mm		347 mm					
HP-6440-MK	-SF	-ESD		415 mm		398 mm					

400 x 600 mm iç içe istifleme Yükseklik
400 x 600 mm Nesting height

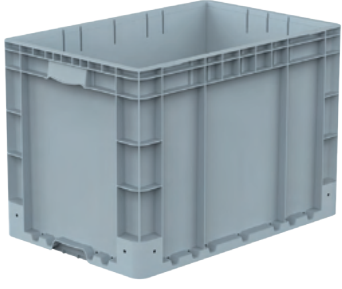


Tüm modellerimizde pp levha seperatör uygulanabilir.
pp sheet separators can be applied on all our designs.

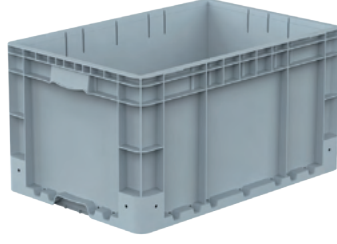


400 X 600 MM ENDÜSTRİYEL KASALAR

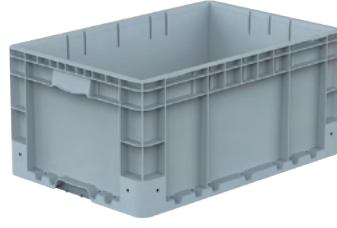
400 X 600 MM INDUSTRIAL CRATES



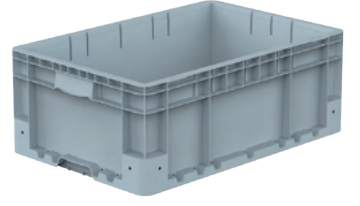
HK-4642



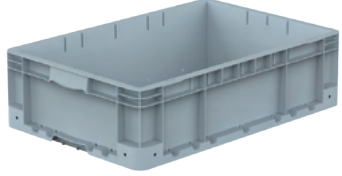
HK-4632



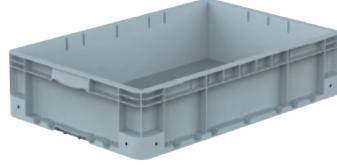
HK-4628



HK-4623



HK-4617



HK-4615



İsteğe bağlı olarak sıvı tahliye deliğiyle veya deliksiz şekilde üretilebilir.
It can be produced with or without optional liquid drainage holes.

ÜRÜN KODU PRODUCT CODE	DIŞ ÖLÇÜ EXTERNAL DIMENSIONS		İÇ ÖLÇÜ INTERNAL DIMENSIONS		PALET ADET PALLET QTY 100x120	40HC ADET 40HC QTY	TIR ADET TRUCK QTY	ORJİNAL ORIGINAL	GERİ DÖNÜŞÜM RECYCLE
	Yük / H		Yük / H						
HK-4642	400 x 600	420 mm	364 x 564	410 mm	25	550	650		
HK-4632		320 mm		310 mm	50	1100	1300		
HK-4628		280 mm		270 mm	50	1100	1300		
HK-4623		230 mm		220 mm	50	1100	1300		
HK-4617		170 mm		157 mm	70	1540	1820		
HK-4615		145 mm		133 mm	85	1870	2210		



HK-4642-MK



HK-4632-MK



HK-4628-MK



HK-4623-MK



HK-4617-MK



HK-4615-MK



HK-40x60-ESD KAPAK/ LiD
Diş / Ext 400 x 600 x 14 mm



HK-MK1 MENTEŞE VE KİLİT
HK-MK1 HINGE AND LOCK

ÜRÜN KODU PRODUCT CODE	DIŞ ÖLÇÜ EXTERNAL DIMENSIONS		İÇ ÖLÇÜ INTERNAL DIMENSIONS		PALET ADET PALLET QTY 100x120	40HC ADET 40HC QTY	TIR ADET TRUCK QTY	ORJİNAL ORIGINAL	GERİ DÖNÜŞÜM RECYCLE
	Yük / H		Yük / H						
HK-4642-MK	400 x 600	434 mm	364 x 564	410 mm	25	550	650		
HK-4632-MK		334 mm		310 mm	35	770	910		
HK-4628-MK		294 mm		270 mm	35	770	910		
HK-4623-MK		244 mm		220 mm	45	990	1170		
HK-4617-MK		184 mm		157 mm	60	1320	1560		
HK-4615-MK		159 mm		133 mm	75	1650	1950		

400 X 600 MM ESD ENDÜSTRİYEL KASALAR

400 X 600 MM ESD INDUSTRIAL CRATES



HK-4642-ESD



HK-4632-ESD



HK-4628-ESD



HK-4623-ESD



HK-4617-ESD

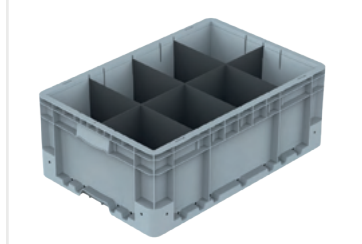


HK-4615-ESD



DOLLY 4262 En/W Boy/L Yük/H
Dış / Ext 400 x 600 x 190 mm

Plastik kasa taşıyıcı
Plastic crate carrier



pp levha seperatör uygulanabilir.
PP sheet separator can be applied.

ÜRÜN KODU PRODUCT CODE	DIŞ ÖLÇÜ EXTERNAL DIMENSIONS	Yük / H	İÇ ÖLÇÜ INTERNAL DIMENSIONS		PALET ADET PALLET QTY 100x120	40HC ADET 40HC QTY	TIR ADET TRUCK QTY	
			Yük / H	Yük / H				
HK-4642-ESD	400 x 600	420 mm	364 x 564	410 mm	25	550	650	
HK-4632-ESD		320 mm		310 mm	50	1100	1300	
HK-4628-ESD		280 mm		270 mm	50	1100	1300	
HK-4623-ESD		230 mm		220 mm	50	1100	1300	
HK-4617-ESD		170 mm		157 mm	70	1540	1820	
HK-4615-ESD		145 mm		133 mm	85	1870	2210	



HK-4642-MK-ESD



HK-4632-MK-ESD



HK-4628-MK-ESD



HK-4623-MK-ESD



HK-4617-MK-ESD



HK-4615-MK-ESD



HK-40x60-ESD KAPAK/ LİD



HK-MK1 MENTEŞE VE KİLİT
HK-MK1 HINGE AND LOCK

ÜRÜN KODU PRODUCT CODE	DIŞ ÖLÇÜ EXTERNAL DIMENSIONS	Yük / H	İÇ ÖLÇÜ INTERNAL DIMENSIONS		PALET ADET PALLET QTY 100x120	40HC ADET 40HC QTY	TIR ADET TRUCK QTY	
			Yük / H	Yük / H				
HK-4642-MK-ESD	400 x 600	434 mm	364 x 564	410 mm	25	550	650	
HK-4632-MK-ESD		334 mm		310 mm	35	770	910	
HK-4628-MK-ESD		294 mm		270 mm	35	770	910	
HK-4623-MK-ESD		294 mm		220 mm	45	990	1170	
HK-4617-MK-ESD		184 mm		157 mm	55	1210	1430	
HK-4615-MK-ESD		159 mm		133 mm	70	1540	1820	

R-KLT & RL-KLT KASALAR

R-KLT & RL-KLT CRATES

R-KLT-3215



RL-KLT-3147

R-KLT-4315



RL-KLT-4147

R-KLT-4322



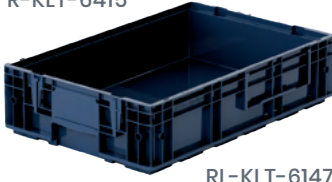
RL-KLT-4213

R-KLT-4329



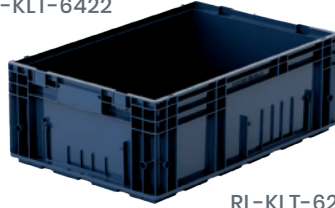
RL-KLT-4280

R-KLT-6415



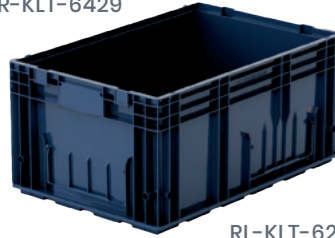
RL-KLT-6147

R-KLT-6422



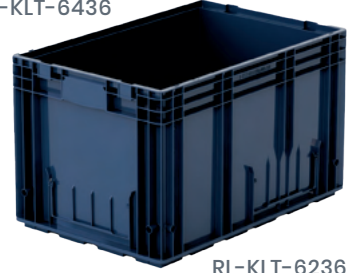
RL-KLT-6213

R-KLT-6429



RL-KLT-6280

R-KLT-6436



RL-KLT-6236



R-KLT Güçlendirilmiş Taban
R-KLT Reinforcement base

ÜRÜN KODU PRODUCT CODE	DIŞ ÖLÇÜ EXTERNAL DIMENSIONS	İÇ ÖLÇÜ INTERNAL DIMENSIONS	PALET ADET PALLET QTY 100x120	40HC ADET 40HC QTY	TIR ADET TRUCK QTY	ORJİNAL ORIGINAL	GERİ DÖNÜŞÜM RECYCLE
R-KLT-3215	200 x 300 x 147 mm	170 x 245 x 125 mm	340	7480	8840		
R-KLT-4315	300 x 400 x 147 mm	265 x 340 x 120 mm	170	3740	4420		
R-KLT-4322	300 x 400 x 215 mm	265 x 340 x 195 mm	120	2640	3120		
R-KLT-4329	300 x 400 x 280 mm	265 x 340 x 255 mm	80	1706	2080	■	■ ■
R-KLT-6415	400 x 600 x 147 mm	364 x 544 x 109 mm	85	1870	2210	■	■ ■
R-KLT-6422	400 x 600 x 215 mm	364 x 544 x 195 mm	60	1320	1560		
R-KLT-6429	400 x 600 x 280 mm	364 x 544 x 255 mm	45	990	1170		
R-KLT-6436	400 x 600 x 360 mm	364 x 544 x 335 mm	35	770	910		



RL-KLT Düz Taban
RL-KLT Flat Base

RL-KLT-3147	200 x 300 x 147 mm	170 x 245 x 143 mm	340	7480	8840		
RL-KLT-4147	300 x 400 x 147 mm	265 x 340 x 143 mm	170	3740	4420		
RL-KLT-4213	300 x 400 x 215 mm	265 x 340 x 211 mm	120	2640	3120		
RL-KLT-4280	300 x 400 x 280 mm	265 x 340 x 276 mm	80	1706	2080	■	■ ■
RL-KLT-6147	400 x 600 x 147 mm	364 x 544 x 143 mm	85	1870	2210	■	■ ■
RL-KLT-6213	400 x 600 x 215 mm	364 x 544 x 211 mm	60	1320	1560		
RL-KLT-6280	400 x 600 x 280 mm	364 x 544 x 276 mm	45	990	1170		
RL-KLT-6236	400 x 600 x 360 mm	364 x 544 x 356 mm	35	770	910		

Aksesuarlar / Accessories



ESD R-KLT & RL-KLT KASALAR

ESD R-KLT & RL-KLT CRATES

R-KLT-3115



RL-KLT-3115

R-KLT-4115



RL-KLT-4047

R-KLT-4122



RL-KLT-4013

R-KLT-4129



RL-KLT-4080

R-KLT-6115



RL-KLT-6047

R-KLT-6122



RL-KLT-6013

R-KLT-6129



RL-KLT-6080



R-KLT Güçlendirilmiş Taban
R-KLT Reinforcement base

ÜRÜN KODU PRODUCT CODE	DIŞ ÖLÇÜ EXTERNAL DIMENSION	İÇ ÖLÇÜ INTERNAL DIMENSIONS	PALET ADET PALLET QTY 100x120	40HC ADET 40HC QTY	TIR ADET TRUCK QTY
R-KLT-3115	200 x 300 x 147 mm	170 x 245 x 125 mm	340	7480	8840
R-KLT-4115	300 x 400 x 147 mm	265 x 340 x 120 mm	170	3740	4420
R-KLT-4122	300 x 400 x 215 mm	265 x 340 x 195 mm	120	2640	3120
R-KLT-4129	300 x 400 x 280 mm	265 x 340 x 255 mm	80	1706	2080
R-KLT-6115	400 x 600 x 147 mm	364 x 544 x 109 mm	85	1870	2210
R-KLT-6122	400 x 600 x 215 mm	364 x 544 x 195 mm	45	990	1170
R-KLT-6129	400 x 600 x 280 mm	364 x 544 x 255 mm	35	770	910



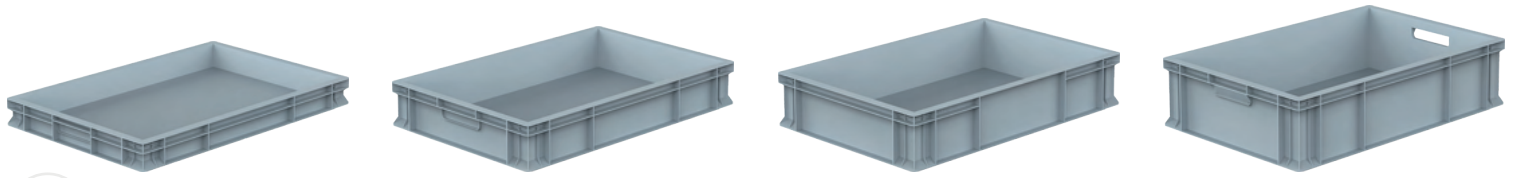
RL-KLT Düz Taban
RL-KLT Flat Base

RL-KLT-3115	200 x 300 x 147 mm	170 x 245 x 143 mm	340	7480	8840
RL-KLT-4047	300 x 400 x 147 mm	265 x 340 x 143 mm	170	3740	4420
RL-KLT-4013	300 x 400 x 215 mm	265 x 340 x 211 mm	120	2640	3120
RL-KLT-4080	300 x 400 x 280 mm	265 x 340 x 276 mm	80	1706	2080
RL-KLT-6047	400 x 600 x 147 mm	364 x 544 x 143 mm	85	1870	2210
RL-KLT-6013	400 x 600 x 215 mm	364 x 544 x 211 mm	45	990	1170
RL-KLT-6080	400 x 600 x 280 mm	364 x 544 x 276 mm	35	770	910

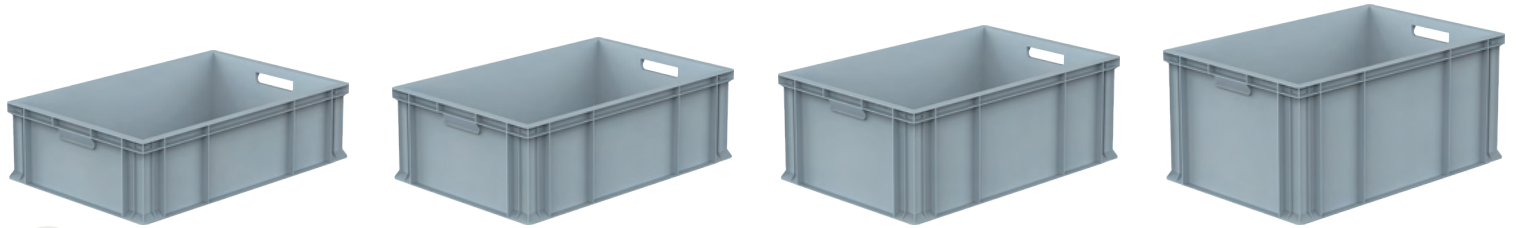


400 X 600 MM KAPALI KASALAR

400 X 600 MM SOLID CRATES



	HP-6503	HP-1003	HP-1203	HP-1503
	HP-6504	HP-1004	HP-1204	HP-1504



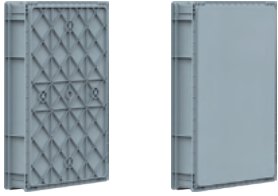
	HP-1703	HP-2003	HP-2303	HP-2803
	HP-1704	HP-2004	HP-2304	HP-2804

400 x 600 mm Kapalı Kasalar

Kapalı kasalar sağlam yapısı sayesinde ürünlerinizi güvende taşımanızı, depolamanızı ve istiflemenizi sağlar. Farklı ebat, renk ve taban seçenekleri ile PPC'den üretilen kapalı kasalar isteğe göre el tutma yeri açık veya kapalı olarak tercih edilebilirler.

400 x 600 mm Solid Crates

The solid crates allow you to carry and store your products safely with their robust structure. PPC solid crates have different size, color, base, open hand grip, closed hand grip options.



KAPALI TABAN CLOSED BASE	DÜZ TABAN FLAT BASE	DIŞ ÖLÇÜ / EXT DIM		İÇ ÖLÇÜ / INT DIM		PALET ADET PALLET QTY	40HC ADET 40HC QTY	TIR ADET TRUCK QTY	ORJİNAL ORIGINAL
		Yük / H	Yük / H						
HP-6503	HP-6504	400 x 600	65 mm	365 x 565	53 mm	195	4290	5070	 GERİ DÖNÜŞÜM RECYCLE
HP-1003	HP-1004		100 mm		88 mm	125	2750	3250	
HP-1203	HP-1204		120 mm		108 mm	100	2200	2600	
HP-1503	HP-1504		150 mm		138 mm	80	1760	2080	
HP-1703	HP-1704		170 mm		158 mm	70	1540	1820	
HP-2003	HP-2004		200 mm		188 mm	60	1320	1560	
HP-2303	HP-2304		230 mm		218 mm	50	1100	1300	
HP-2803	HP-2804		280 mm		268 mm	40	880	1040	
ANTİSTATİK CONDUCTIVE									

Aksesuarlar / Accessories



AX-40X60 KAPAK / LID

Diş / Ext 400 x 600 x 20 mm



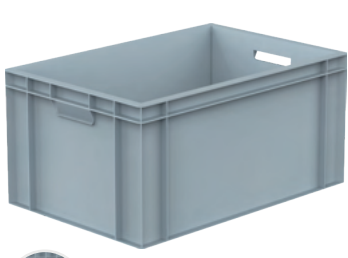
HP-41X61 KAPAK / LID

Diş / Ext 400 x 600 x 10 mm

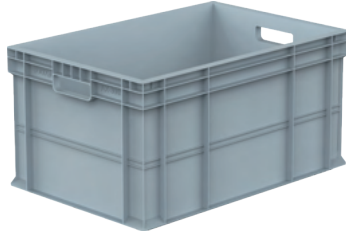


400 X 600 MM KAPALI KASALAR

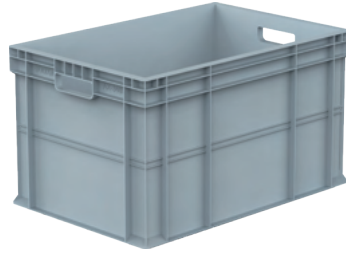
400 X 600 MM SOLID CRATES



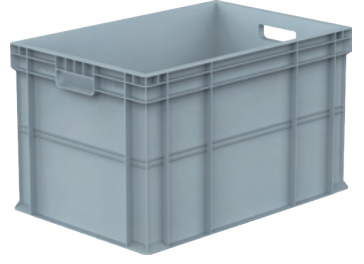
AX-2903



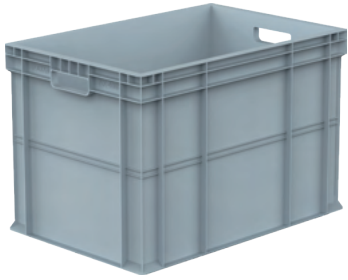
HP-3003



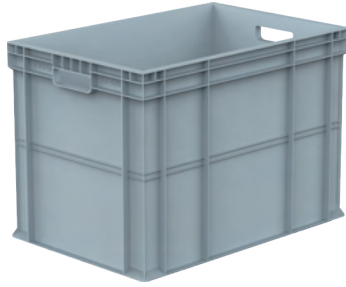
HP-3403



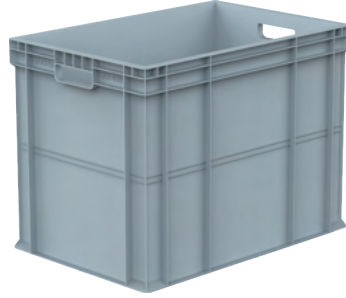
HP-3603



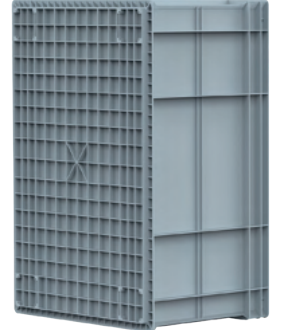
HP-4003



HP-4203



HP-4503



KAPALI TABAN
CLOSED BASE



ÜRÜN KODU PRODUCT CODE	DIŞ ÖLÇÜ / EXT DIM		İÇ ÖLÇÜ / INT DIM		PALET ADET PALLET QTY 100x120	40HC ADET 40HC QTY	TIR ADET TRUCK QTY	ORJİNAL ORIGINAL
	Yük / H		Yük / H					
AX-2903	400 x 600	290 mm	365 x 565	268 mm	40	880	1040	 GERİ DÖNÜŞÜM RECYCLE
HP-3003		300 mm		284 mm	40	880	1040	
HP-3403		340 mm		324 mm	50	1100	1300	
HP-3603		360 mm		342 mm	50	1100	1300	
HP-4003		400 mm		386 mm	30	660	780	
HP-4203		425 mm		410 mm	25	550	650	
HP-4503		450 mm		436 mm	25	550	650	

Aksesuarlar / Accessories



Dolly 4262

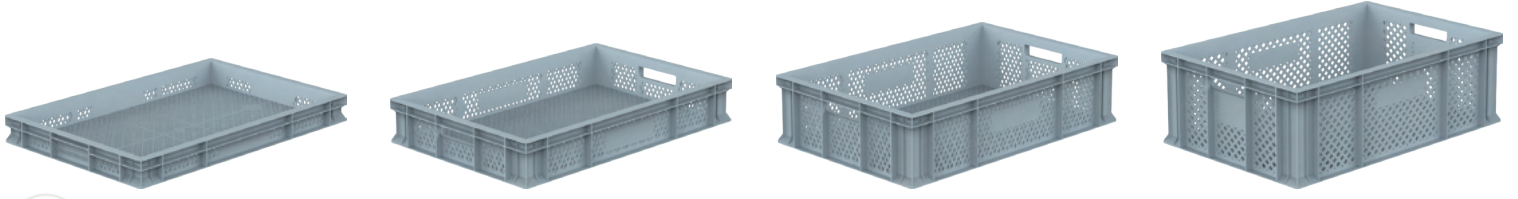
Diş / Ext 420 x 600 x 190 mm



Plastik kasa taşıyıcı
Plastic crate carrier



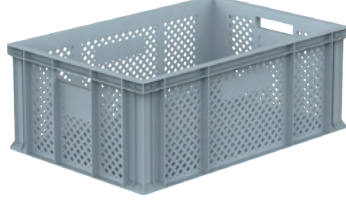
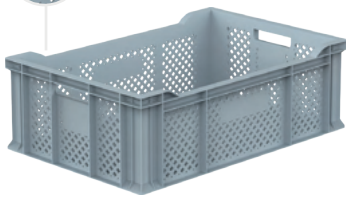
400 X 600 MM DELİKLİ KASALAR

400 X 600 MM PERFORATED CRATES

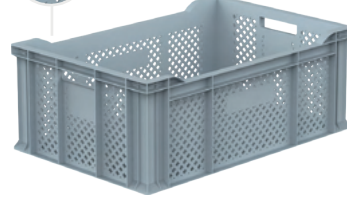




	HP-6501	HP-1001	HP-1501	HP-2001
	HP-6502	HP-1002	HP-1502	HP-2002

Yükseltme teraslı
Walls with terrace



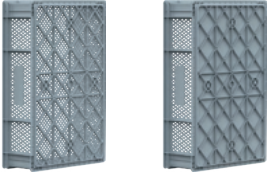
Yükseltme teraslı
Walls with terrace



	HP-2005	HP-2301	HP-2305
	HP-2006	HP-2302	HP-2306



400 x 600 mm Delikli Kasalar

Delikli plastik kasalar; meyve, sebze, narenciye, gıda, tarım, market ve sanayi dahil birçok sektörde kullanılmaktadır. Farklı ebat, renk ve taban seçenekleriyle PPC'den üretilen kasalar, isteğe göre el tutma yeri açık veya kapalı olarak tercih edilebilir.



400 x 600 mm Perforated Crates

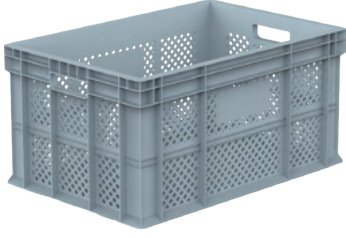
Perforated plastic crates are used in various sectors, including fruit, vegetable, citrus, food, agriculture, retail, and industry. Made of PPC with different size, color, and base options, they can be supplied with open or closed hand grips upon request.

KAPALI TABAN CLOSED BASE	DÜZ TABAN FLAT BASE	DIŞ ÖLÇÜ / EXT DIM Yük / H		İÇ ÖLÇÜ / INT DIM Yük / H		PALET ADET PALLET QTY 100x120	40HC ADET 40HC QTY	TIR ADET TRUCK QTY	ORJİNAL ORIGINAL
HP-6501	HP-6502	400 x 600	65 mm	365 x 565	53 mm	195	4290	5070	
HP-1001	HP-1002		100 mm		88 mm	125	2750	3250	
HP-1501	HP-1502		150 mm		137 mm	80	1760	2080	
HP-2001	HP-2002		200 mm		188 mm	65	1260	1690	
HP-2005	HP-2006		200 mm		188 mm	60	1320	1560	GERİ DÖNÜŞÜM RECYCLE 
HP-2301	HP-2302		230 mm		218 mm	50	1100	1300	
HP-2305	HP-2306		230 mm		218 mm	50	1100	1300	

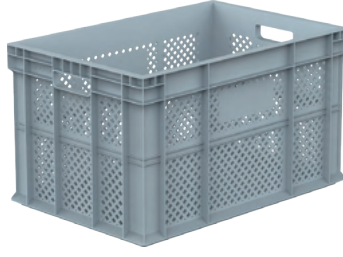


400 X 600 MM DELİKLİ KASALAR

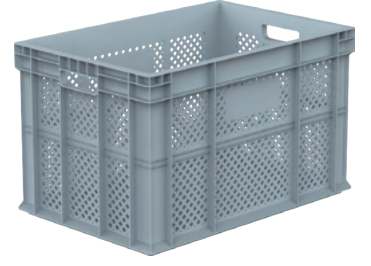
400 X 600 MM PERFORATED CRATES



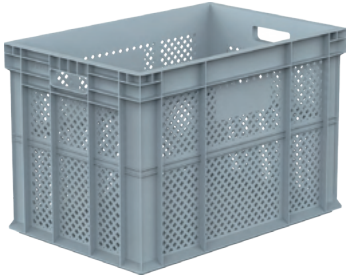
HP-3002



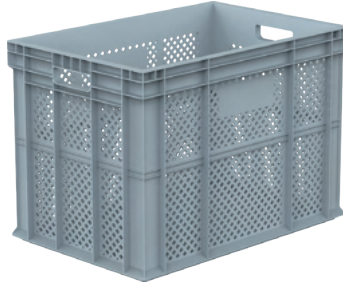
HP-3402



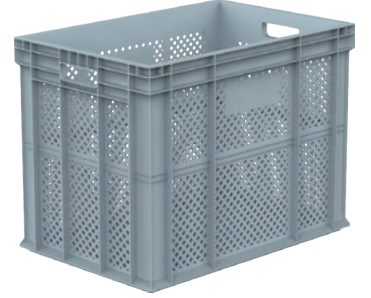
HP-3602



HP-4002



HP-4202



HP-4502

100x120

ÜRÜN KODU PRODUCT CODE	DIŞ ÖLÇÜ / EXT DIM Yük / H	İÇ ÖLÇÜ / INT DIM Yük / H	PALET ADET PALLET QTY 100x120	40HC ADET 40HC QTY	TIR ADET TRUCK QTY	ORJİNAL ORIGINAL
HP-3002	400 x 600	300 mm	40	880	1040	
HP-3402		340 mm	50	1100	1300	
HP-3602		360 mm	50	1100	1300	
HP-4002		400 mm	30	660	780	
HP-4202		425 mm	25	550	650	
HP-4502		450 mm	25	550	650	

Aksesuarlar / Accessories



DOLLY 4262

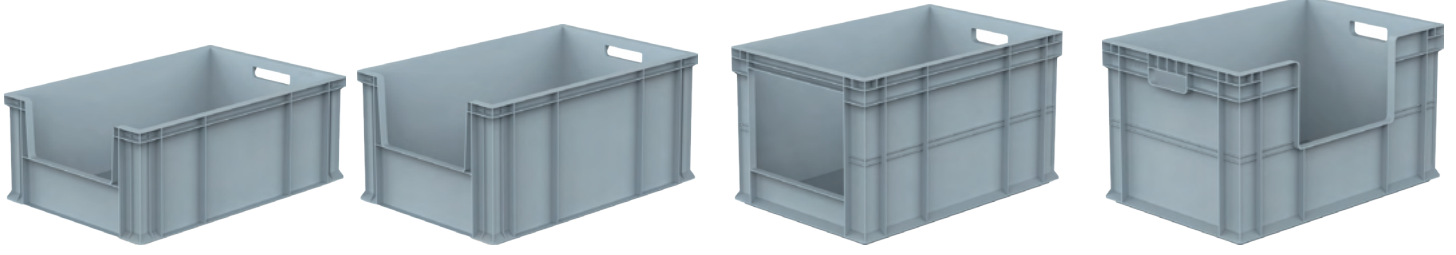
Diş / Ext 420 x 600 x 190 mm

Plastik kasa taşıyıcı
Plastic crate carrier



400 X 600 MM KAPALI ÖNÜ AÇIK KASALAR

400 X 600 MM SOLID OPEN FRONT CRATES

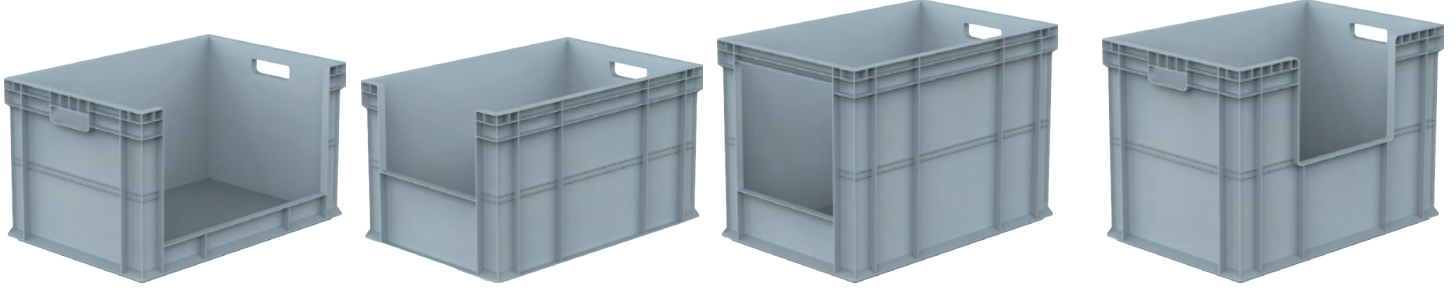


HP-4622 AV

HP-4628 AV

AX-3403 AVK

HP-3403 AVU

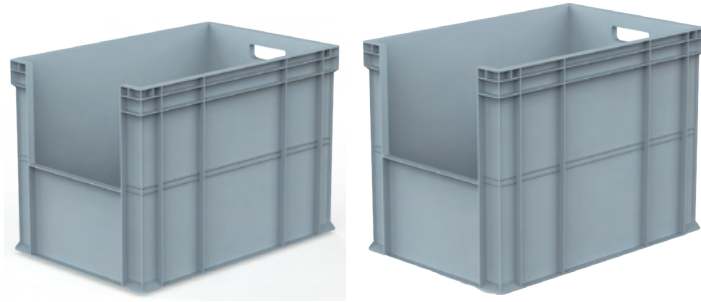


AX-3403 AVU

HP-4634 AV

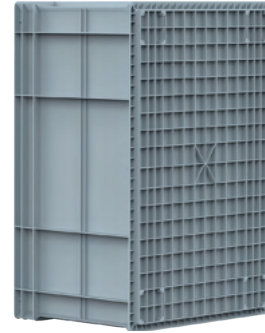
AX-4203 AVK

HP-4203 AVU



HP-4642 AV

HP-4645 AV

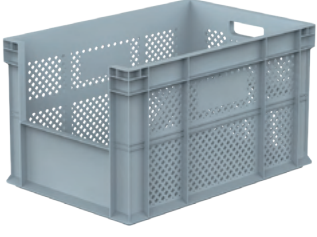


KAPALI TABAN CLOSED BASE	DIŞ ÖLÇÜ / EXT DIM		İÇ ÖLÇÜ / INT DIM		PALET ADET PALLET QTY 100x120	40HC ADET 40HC QTY	TIR ADET TRUCK QTY	ORJİNAL ORIGINAL
	400 x 600	Yük / H	365 x 565	Yük / H				
HP-4622 AV		230 mm		205 mm	50	1100	1300	
HP-4628 AV		280 mm		268 mm	50	1100	1300	
AX-3403 AVK		340 mm		324 mm	50	1100	1300	
HP-3403 AVU		340 mm		324 mm	50	1100	1300	
AX-3403 AVU		340mm		324 mm	50	1100	1300	
HP-4634 AV		340 mm		325 mm	50	1100	1300	
AX-4203 AVK		425 mm		415 mm	25	550	650	
HP-4203 AVU		425 mm		410 mm	25	550	650	
HP-4642 AV		425 mm		410 mm	25	550	650	
HP-4645 AV		450 mm		436 mm	25	550	650	

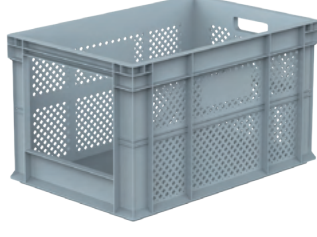


400 X 600 MM DELİKLİ ÖNÜ AÇIK KASALAR

400 X 600 MM PERFORATED OPEN FRONT CRATES



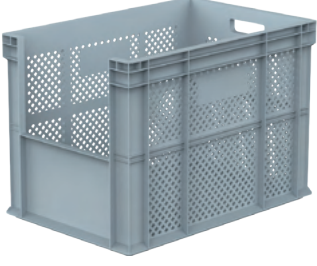
AX-3402 AV



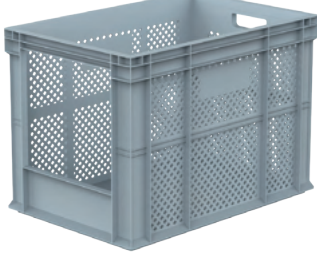
HP-3402 AVK



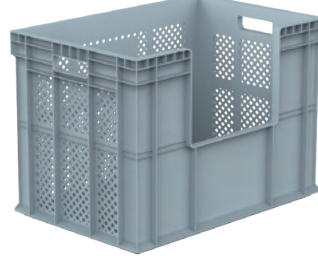
HP-3402 AVU



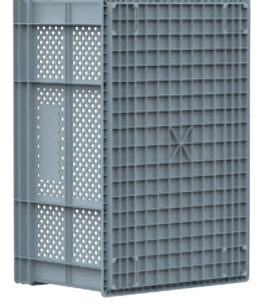
HP-4202 AV



HP-4202 AVK



HP-4202 AVU



KAPALI TABAN
CLOSED BASE

ÜRÜN KODU PRODUCT CODE	DIŞ ÖLÇÜ / EXT DIM	İÇ ÖLÇÜ / INT DIM		PALET ADET PALLET QTY 100x120	40HC ADET 40HC QTY	TIR ADET TRUCK QTY	ORJİNAL ORIGINAL
		Yük / H	Yük / H				
AX-3402 AV	400 x 600	340 mm	324 mm	40	880	1040	GERİ DÖNÜŞÜM RECYCLE
HP-3402 AVK		340 mm	324 mm				
HP-3402 AVU		340 mm	324 mm				
HP-4202 AV		425 mm	410 mm	25	550	650	
HP-4202 AVK		425 mm	410 mm				
HP-4202 AVU		425 mm	410 mm				

Aksesuarlar / Accessories



DOLLY 4262

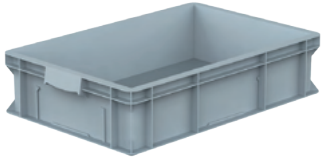
Diş / Ext 420 x 600 x 190 mm

Plastik kasa taşıyıcı
Plastic crate carrier

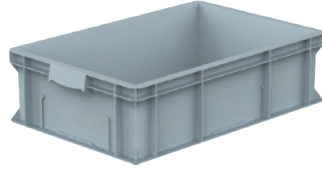


400 X 600 MM SANAYİ KASALARI

400 X 600 MM INDUSTRIAL CRATES



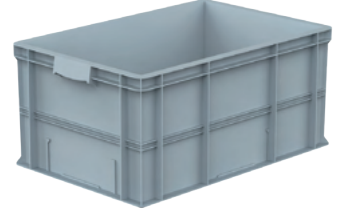
HP-4615



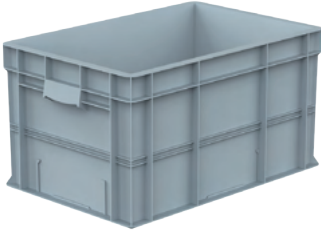
HP-4617



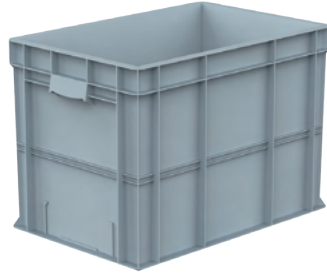
HP-4622



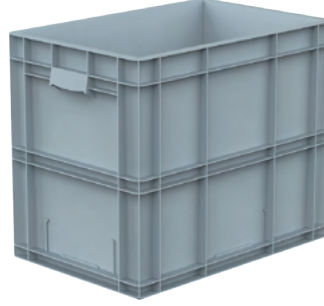
HP-4628



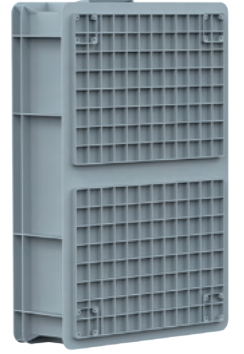
HP-4632



HP-4642



HP-4650



GÜÇLENDİRİLMİŞ TABAN
REINFORCED BASE



HP-4615 ESD



HP-HP-4617 ESD



HP-4622 ESD



HP-4628 ESD



HP-4632 ESD



HP-4642 ESD



HP-4650 ESD



ÜRÜN KODU
PRODUCT
CODE



DIŞ ÖLÇÜ / EXT DIM

Yük / H

İÇ ÖLÇÜ / INT DIM

Yük / H

PALET ADET
PALLET QTY

40HC ADET
40HC QTY

TIR ADET
TRUCK QTY

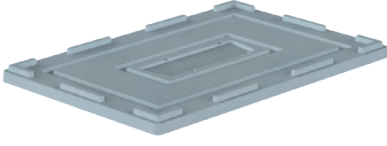
ORJINAL
ORIGINAL



GERİ DÖNÜŞÜM
RECYCLE

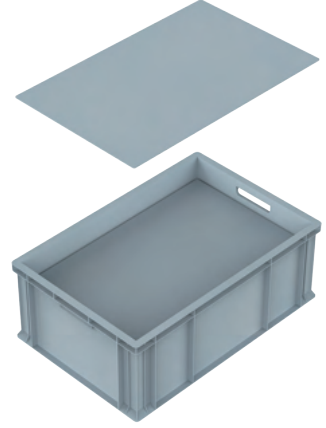
ÜRÜN KODU PRODUCT CODE	DIŞ ÖLÇÜ / EXT DIM Yük / H	İÇ ÖLÇÜ / INT DIM Yük / H	PALET ADET PALLET QTY	40HC ADET 40HC QTY	TIR ADET TRUCK QTY	ORJINAL ORIGINAL	GERİ DÖNÜŞÜM RECYCLE
HP-4615	HP-4615 ESD 145 mm	130 mm	85	1870	2210		
HP-4617	HP-4617 ESD 170 mm	155 mm	70	1540	1820		
HP-4622	HP-4622 ESD 230 mm	205 mm	50	1100	1300		
HP-4628	HP-4628 ESD 280 mm	265 mm	50	1100	1300		
HP-4632	HP-4632 ESD 325 mm	310 mm	50	1100	1300		
HP-4642	HP-4642 ESD 425 mm	410 mm	25	550	650		
HP-4650	HP-4650 ESD 500 mm	485 mm	25	550	650		

AKSESUARLAR ACCESSORIES



HP-40X60 KAPAK / LID

Dış / Ext 400 x 600 x 20 mm



HP-34x54 En/W Boy/L Yük/H

Dış / Ext 340 x 540 x 10 mm

Yatay Separatör
Horizontal separators



DOLLY 4060 En/W Boy/L Yük/H

Dış / Ext 420 x 600 x 190 mm

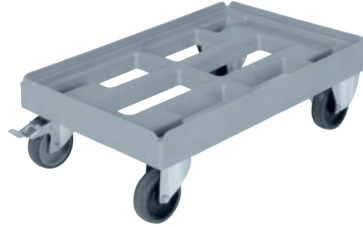
Plastik kasa taşıyıcı
Plastic crate carrier



DOLLY 4262 En/W Boy/L Yük/H

Dış / Ext 420 x 600 x 190 mm

Plastik kasa taşıyıcı
Plastic crate carrier



T-50 Tekerlek / Wheel

Dış / Ext 50x75 mm

HP-4615, HP-4617
HP-4622, HP-4628



T-75 Tekerlek / Wheel

Dış / Ext 50x75 mm

HP-4632, HP-4642
HP-4650, HP-6943-K

Kanban Yapıştırma Etiketler / Sticker kanban label holders



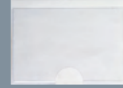
KANBAN 225x160
225 X 160 mm



KANBAN 225x90
225 X 90 mm












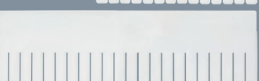


KANBAN 150x90
150 X 90 mm

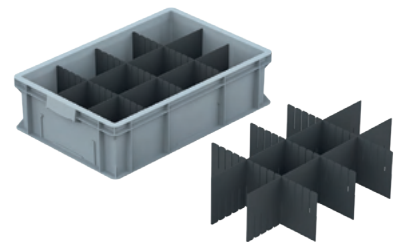


KANBAN 110x110
110 X 110 mm



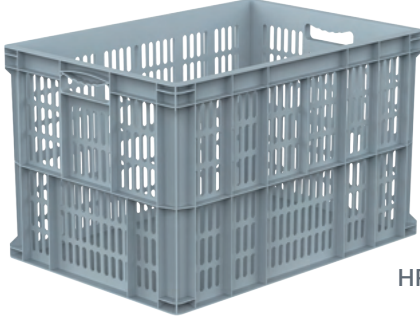
Dikey Separatörler / Upright separators

ÜRÜN KODU PRODUCT CODE	ÖLÇÜLER DIMENSIONS	ESD ÜRÜN KODU ESD PRODUCT CODE
 SPR-26	260 x 90 mm	 SPR-26 ESD
 SPR-39	356 X 90 mm	 SPR-39 ESD
 SPR-59	556 X 90 mm	 SPR-59 ESD
 SPR-2618	260 X 185 mm	 SPR-2618 ESD
 SPR-3618	356 X 185 mm	 SPR-3618 ESD
 SPR-5618	556 X 185 mm	 SPR-5618 ESD
 SPR-3615	352 X 150 mm	 SPR-3615 ESD
 SPR-5615	555 X 150 mm	 SPR-5615 ESD

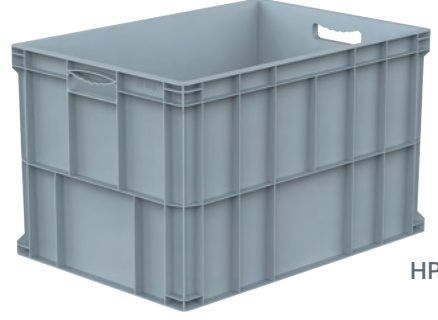


480 X 690 MM KASALAR

480 X 690 MM CRATES



HP-6943-A



HP-6943-K



HP-6943-AT



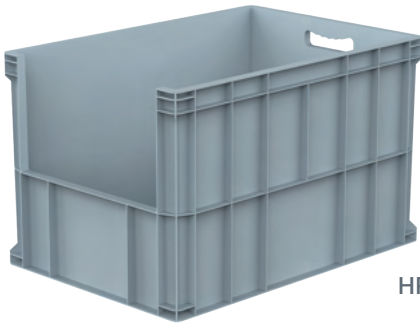
HP-6943-KT



HP-6943-MK



HP-6943-MKT



HP-6943-AV



HP-43X69 Kapak/ Lid

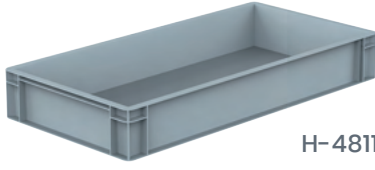
Diş / Ext 480 x 690 x 25 mm

480 x 690 mm Kapak / Lid

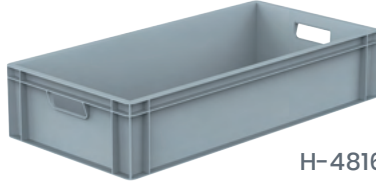
ÜRÜN KODU PRODUCT CODE	DIŞ ÖLÇÜ / EXT DIM		İÇ ÖLÇÜ / INT DIM		PALET ADET PALLET QTY 100x120	40HC ADET 40HC QTY	TIR ADET TRUCK QTY	ORJİNAL ORIGINAL
	480 x 690	Yük / H	440 x 650	Yük / H				
HP-6943-A		430 mm		420 mm	24	528	624	GERİ DÖNÜŞÜM RECYCLE
HP-6943-K	430 mm	420 mm	24	528	624			
HP-6943-AT	540 mm	420 mm	16	352	416			
HP-6943-KT	540 mm	420 mm	16	352	416			
HP-6943-MK	455 mm	420 mm	16	352	416			
HP-6943-MKT	555 mm	420 mm	16	352	416			
HP-6943-AV	430 mm	420 mm	24	528	624			

400 X 800 MM & 400 X 1200 MM KASALAR

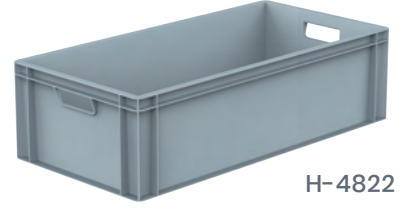
400 X 800 MM & 400 X 1200 MM CRATES



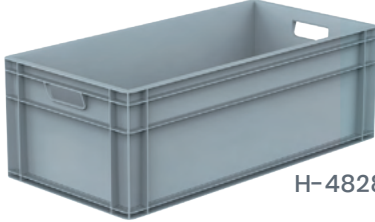
H-4811



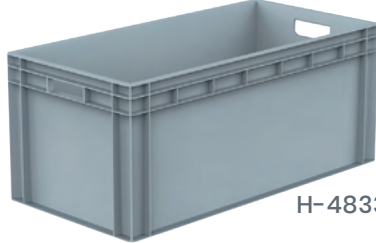
H-4816



H-4822



H-4828



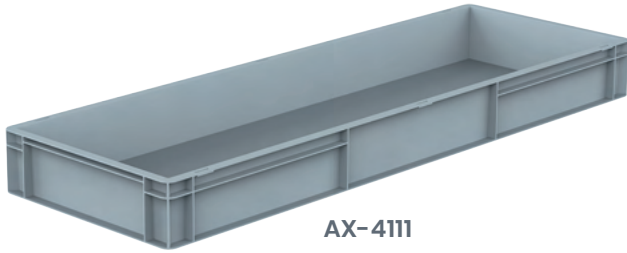
H-4833



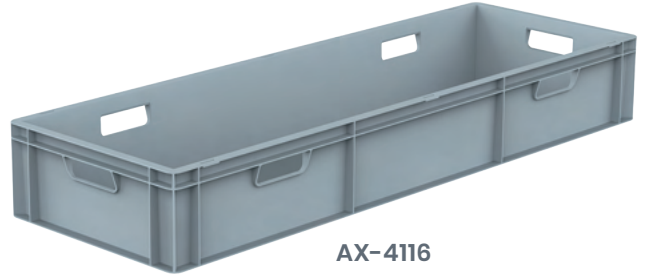
YM-4080

Dış / Ext 420 x 820 x 150 mm
Metal kasa taşıyıcı / Metal Dolly

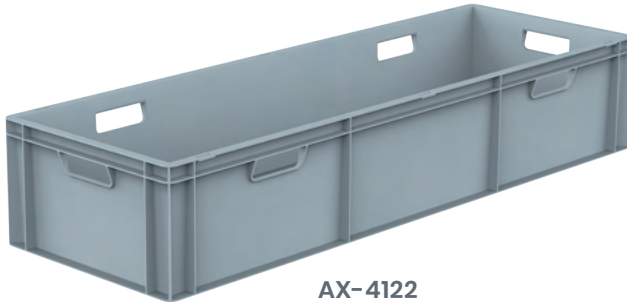
ÜRÜN KODU PRODUCT CODE	DIŞ ÖLÇÜ / EXT DIM		İÇ ÖLÇÜ / INT DIM		PALET ADET PALLET QTY	40HC ADET 40HC QTY	TIR ADET TRUCK QTY	ORJİNAL ORIGINAL			
	Yük / H		Yük / H								
H-4811	400 x 800	119 mm	352 x 752	109 mm	60	1320	1560				
H-4816		171 mm		158 mm					42	924	1092
H-4822		227 mm		215 mm					30	660	780
H-4828		278 mm		265 mm					24	528	624
H-4833		340 mm		327 mm					21	462	546



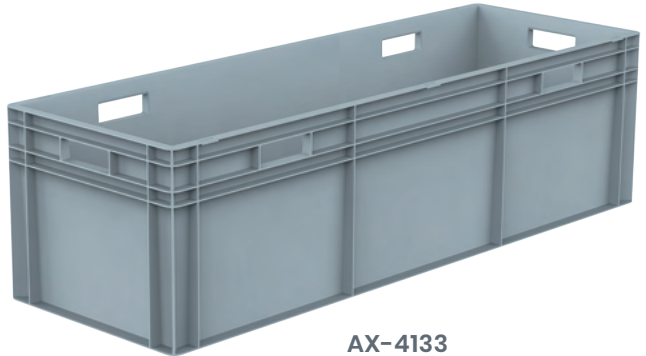
AX-4111



AX-4116



AX-4122



AX-4133



KN-1322



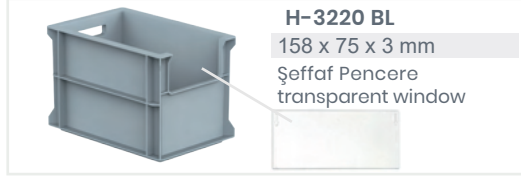
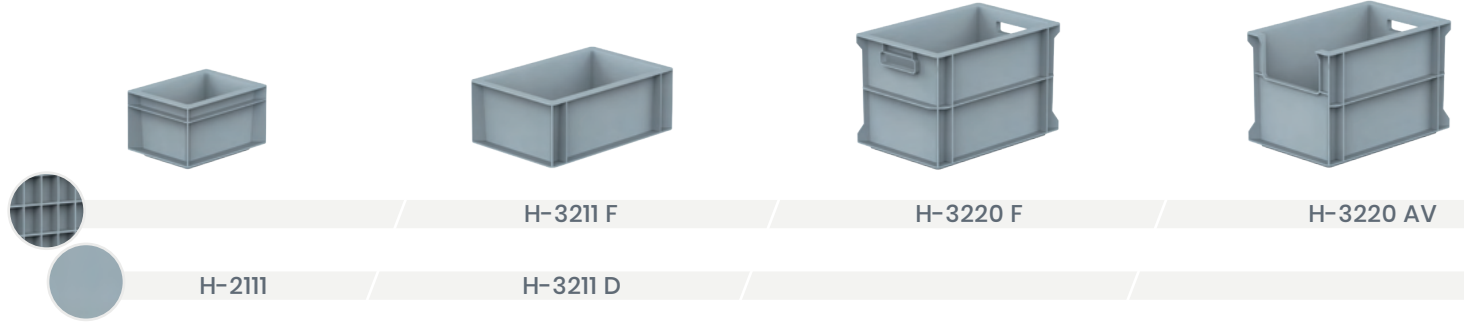
YM-4120

Dış / Ext 420 x 1220 x 150 mm
Metal kasa taşıyıcı
Metal Dolly

ÜRÜN KODU PRODUCT CODE	DIŞ ÖLÇÜ / EXT DIM		İÇ ÖLÇÜ / INT DIM		PALET ADET PALLET QTY	40HC ADET 40HC QTY	TIR ADET TRUCK QTY	ORJİNAL ORIGINAL			
	Yük / H		Yük / H								
AX-4111	400 x 1200	119 mm	354 x 1154	108 mm	40	960	1320				
AX-4116		171 mm		158 mm					28	672	924
AX-4122		230 mm		215 mm					20	480	660
AX-4133		338 mm		324 mm					14	336	462
KN-1322		296 x 996		213 mm					262 x 962	211 mm	44

200 X 300 MM & 300 X 400 MM KASALAR

200 X 300 MM & 300 X 400 MM CRATES

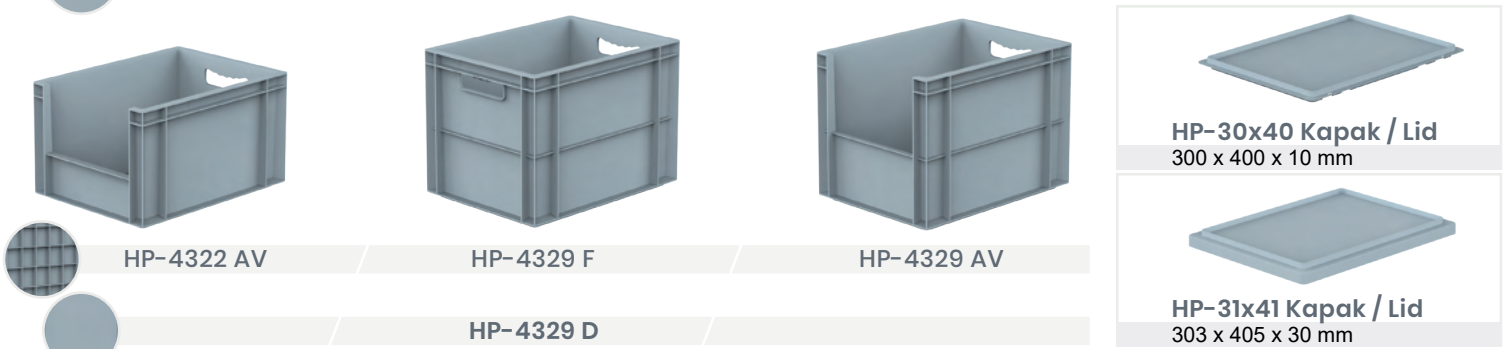
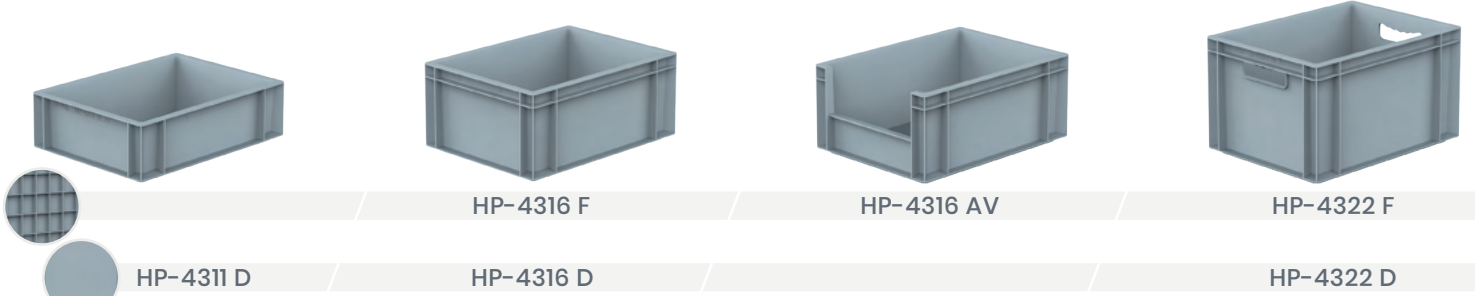


H-3220 BL
158 x 75 x 3 mm
Şeffaf Pencere
transparent window



HP-20x30 Kapak / Lid
200 x 300 x 10 mm

KAPALI TABAN CLOSED BASE	DÜZ TABAN FLAT BASE	DIŞ ÖLÇÜ / EXT DIM		İÇ ÖLÇÜ / INT DIM		PALET ADET PALLET QTY 100x120	40HC ADET 40HC QTY	TIR ADET TRUCK QTY	ORJİNAL ORIGINAL
	H-2111	148 x 200	120 mm	114 x 164	114 mm	840	18480	21840	<p>GERİ DÖNÜŞÜM RECYCLE</p>
H-3211 F	H-3211 D	200 x 300	120 mm	162 x 262	103 mm	400	8800	10400	
H-3220 F			120 mm		115 mm	240	5280	6240	
H-3220 AV			200 mm		185 mm				



HP-30x40 Kapak / Lid
300 x 400 x 10 mm

HP-31x41 Kapak / Lid
303 x 405 x 30 mm

KAPALI TABAN CLOSED BASE	DÜZ TABAN FLAT BASE	DIŞ ÖLÇÜ / EXT DIM		İÇ ÖLÇÜ / INT DIM		PALET ADET PALLET QTY 100x120	40HC ADET 40HC QTY	TIR ADET TRUCK QTY	ORJİNAL ORIGINAL
	HP-4311 D	295 x 395	Yük / H	263 x 365	Yük / H	200	4400	5200	
HP-4316 F	HP-4316 D		117 mm		112 mm	140	3080	3640	
HP-4316 AV			174 mm		160 mm	150	3300	3900	
HP-4322 F	HP4322 D		174 mm		170 mm				
HP-4322 AV			230 mm		160 mm	80	1760	2080	<p>GERİ DÖNÜŞÜM RECYCLE</p>
HP-4329 F	HP-4329 D		230 mm		215 mm				
HP-4329 AV			290 mm		215 mm				
					290 mm		275 mm		
			290 mm		285 mm				
			290 mm		275 mm				

ESD 200 X 300 MM & 300 X 400 MM KASALAR

ESD 200 X 300 MM & 300 X 400 MM CRATES



H-3211 F ESD

H-3220 F ESD

H-3220 AV ESD

H-2111 ESD

H-3211 D ESD



HP-20x30 ESD
Kapak / Lid
200 x 300 x 10 mm

KAPALI TABAN
CLOSED BASE

DÜZ TABAN
FLAT BASE

DIŞ ÖLÇÜ / EXT DIM

İÇ ÖLÇÜ / INT DIM

PALET ADET
PALLET QTY
100x120

40HC ADET
40HC QTY

TIR ADET
TRUCK QTY

KAPALI TABAN CLOSED BASE	DÜZ TABAN FLAT BASE	DIŞ ÖLÇÜ / EXT DIM	İÇ ÖLÇÜ / INT DIM	PALET ADET PALLET QTY 100x120	40HC ADET 40HC QTY	TIR ADET TRUCK QTY
	H-2111 ESD	148 x 200	120 mm 114 x 164 114 mm	840	18480	21840
H-3211 F ESD			120 mm 162 x 262 103 mm	400	8800	10400
	H-3211 D ESD	200 x 300	120 mm 162 x 262 115 mm			
H-3220 F ESD			200 mm 162 x 262 185 mm	240	5280	6240
H-3220 AV ESD		195 x 295	200 mm 160 x 255 185 mm			



HP-4316 F ESD

HP-4316 AV ESD

HP-4322 F ESD

HP-4311 D ESD

HP-4316 D

HP-4322 D ESD



HP-4322 AV ESD

HP-4329 F ESD

HP-4329 AV ESD

HP-4329 D ESD



HP-30x40 ESD Kapak / Lid
300 x 400 x 10 mm



HP-31x41 ESD Kapak / Lid
303 x 405 x 30 mm

KAPALI TABAN
CLOSED BASE

DÜZ TABAN
FLAT BASE

DIŞ ÖLÇÜ / EXT DIM

İÇ ÖLÇÜ / INT DIM

PALET ADET
PALLET QTY
100x120

40HC ADET
40HC QTY

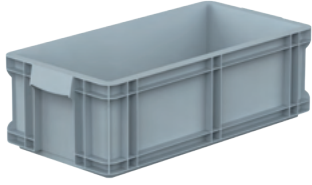
TIR ADET
TRUCK QTY

KAPALI TABAN CLOSED BASE	DÜZ TABAN FLAT BASE	DIŞ ÖLÇÜ / EXT DIM	İÇ ÖLÇÜ / INT DIM	PALET ADET PALLET QTY 100x120	40HC ADET 40HC QTY	TIR ADET TRUCK QTY
	HP-4311 D ESD		117 mm	200	4400	5200
HP-4316 F ESD			174 mm	140	3080	3640
	HP-4316 D ESD		174 mm			
HP-4316 AV ESD			174 mm			
HP4322 F ESD			230 mm			
	HP4322 D ESD	295 x 395	230 mm	150	3300	3900
HP-4322 AV ESD			230 mm			
HP-4329 F ESD			290 mm			
	HP-4329 D ESD		290 mm	80	1760	2080
HP-4329 AV ESD			290 mm			

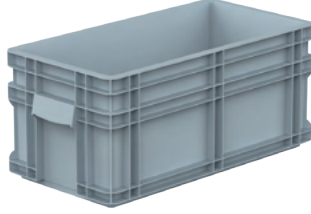


300 X 500 MM KASALAR

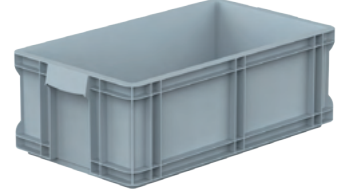
300 X 500 MM INDUSTRIAL CRATES



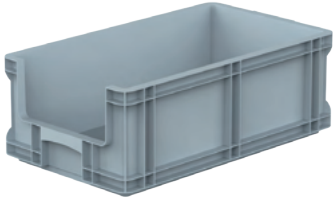
HP-160 K



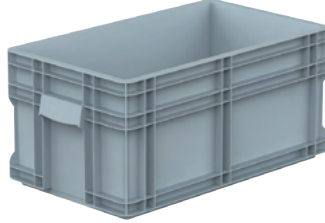
HP-260 K



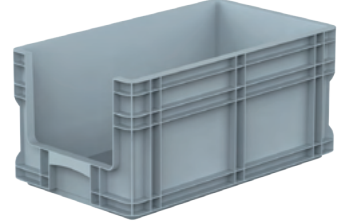
HP-18 K



HP-18-AV



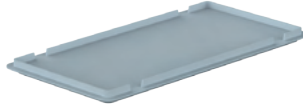
HP-27-K



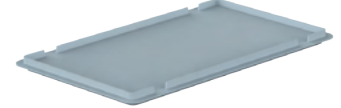
HP-27-AV



HP-270 K



HP-26X50

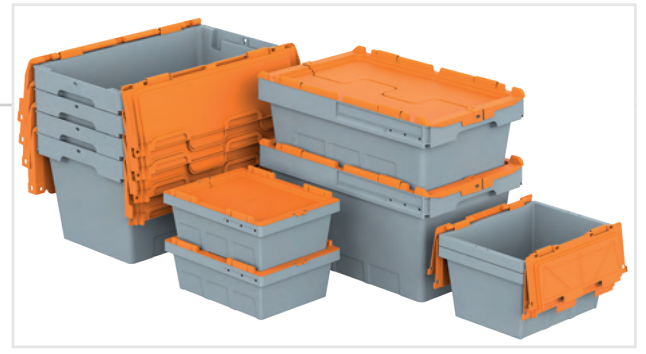


HP-30X50

ÜRÜN KODU PRODUCT CODE	DIŞ ÖLÇÜ / EXT DIM		İÇ ÖLÇÜ / INT DIM		PALET ADET PALLET QTY 100x120	40HC ADET 40HC QTY	TIR ADET TRUCK QTY	ORJİNAL ORIGINAL
	Yük / H	Yük / H	Yük / H	Yük / H				
HP-160 K	256 x 505	165 mm	224 x 470	150 mm	150	3300	3900	 GERİ DÖNÜŞÜM RECYCLE
HP-260 K	256 x 505	221 mm	224 x 470	207 mm	110	2400	2860	
HP-18 K	295 x 505	180 mm	260 x 470	162 mm	112	2464	2912	
HP-18-AV	295 x 505	180 mm	260 x 470	162 mm				
HP-27-K	295 x 505	235 mm	260 x 470	217 mm	80	1760	2080	
HP-27-AV	295 x 505	235 mm	260 x 470	217 mm				
HP-270-K	355 x 415	190 mm	330 x 385	175 mm	78	1716	2028	
HP-26X50	256 x 505	10 mm	HP-160-K ve HP-260-K için kapak / Lid for HP-160-K and HP-260-K					
HP-30X50	295 x 505	10 mm	HP-18-K ve HP-27-K Uyumlu kapak / Lid for HP-18-K and HP-27-K					

KAPAKLI KONİK KASALAR

NESTABLE AND ALC CRATES



HX-2311-MK



HX-2316-MK



HX-5316-MK



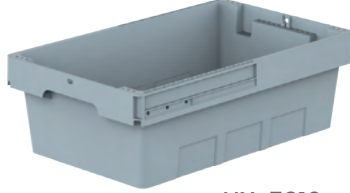
HX-5322-MK



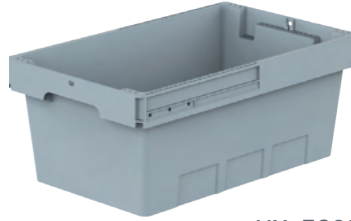
HX-5326-MK



HX-5311



HX-5316



HX-5322



HX-5326



HX-5300 Kapak/ Lid

Diş / Ext 310 x 503 x 50 mm
300 x 500 mm Kapak / Lid

50 mm

İç içe istifleme Yükseklik
Nesting height



HX-1607



HX-1611



HX-2311

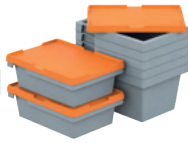


HX-2316



HX-1600 Kapak/ Lid

Diş / Ext 164 x 224 x 10 mm
160 x 220 mm Kapak / Lid



HX-2300 Kapak/ Lid

Diş / Ext 230 x 302 x 15 mm
225 x 295 mm Kapak / Lid



ÜRÜN KODU PRODUCT CODE	DIŞ ÖLÇÜ EXTERNAL DIMENSION		İÇ ÖLÇÜ INTERNAL DIMENSIONS		PALET ADET PALLET QTY	40HC ADET 40HC QTY	TIR ADET TRUCK QTY	ORJİNAL ORIGINAL	GERİ DÖNÜŞÜM RECYCLE
	Yük / H	Yük / H	Yük / H	Yük / H					
HX-2311-MK	225 x 295	125 mm	200 x 270	108 mm	720	15840	18720		
HX-2316-MK	225 x 295	175 mm	200 x 270	158 mm	744	16368	19344		
HX-5316-MK	300 x 490	175 mm	257 x 430	155 mm	368	8096	9568		
HX-5322-MK	300 x 490	235 mm	257 x 430	210 mm	256	5632	6656		
HX-5326-MK	300 x 490	275 mm	257 x 430	255 mm	360	7920	9360		
HX-5311	300 x 490	110 mm	257 x 430	107 mm	304	6688	7904		
HX-5316	300 x 490	160 mm	257 x 430	155 mm	270	5940	7020		
HX-5322	300 x 490	220 mm	257 x 430	210 mm	228	5016	5928		
HX-5326	300 x 490	260 mm	257 x 430	255 mm	192	4224	4992		
HX-1607	160 x 220	70 mm	134 x 194	68 mm	1199	26378	31174		
HX-1611	160 x 220	114 mm	134 x 194	112 mm	1191	26202	30966		
HX-2311	225 x 295	110 mm	200 x 270	108 mm	720	15840	18720		
HX-2316	225 x 295	160 mm	200 x 270	158 mm	744	16368	19344		

PLASTİK KASALAR

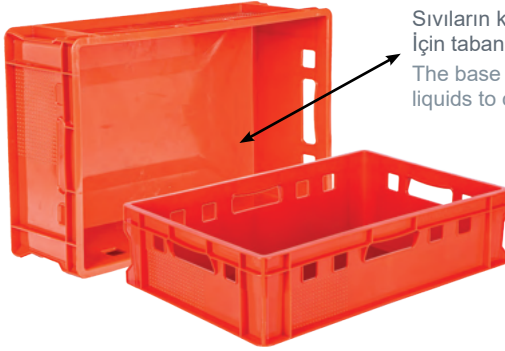
PLASTIC CRATES



HP-2003-1 *En/W Boy/L Yükseklik*
Dış / Ext 590 x 390 x 205 mm
İç / Int 560 x 360 x 195 mm

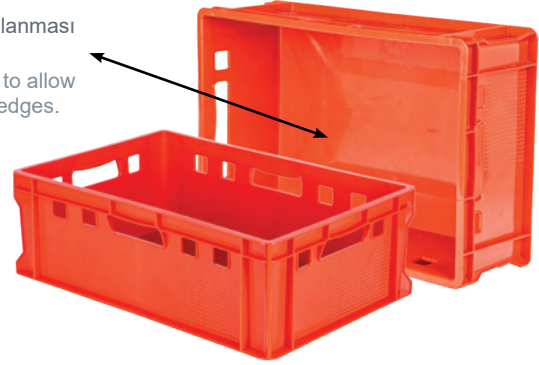


A-600-B *En/W Boy/L Yükseklik*
Dış / Ext 365 x 525 x 315 mm
İç / Int 340 x 500 x 310 mm



E-1 *En/W Boy/L Yükseklik*
Dış / Ext 400 x 600 x 125 mm
İç / Int 370 x 570 x 110 mm

Sıvıların kenarlarda toplanması için tabanı bombelidir
The base is cambered to allow liquids to collect at the edges.



E-2 *En/W Boy/L Yükseklik*
Dış / Ext 400 x 600 x 200 mm
İç / Int 370 x 570 x 184 mm



AX-850
Kod / Code *En/W Boy/L Yükseklik*
Dış / Ext 444 x 634 x 150 mm
İç / Int 435 x 620 x 134 mm



GK-910
Kod / Code *En/W Boy/L Yükseklik*
Dış / Ext 425 x 655 x 390 mm
İç / Int 395 x 635 x 380 mm



KATLANIR DELİKLİ KASALAR

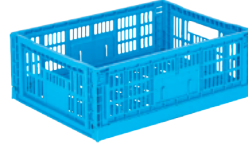
FOLDING PERFORATED CRATES



KTX-1701



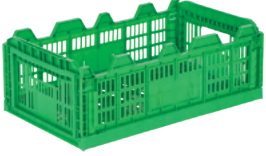
KTX-1705



KTX-3401



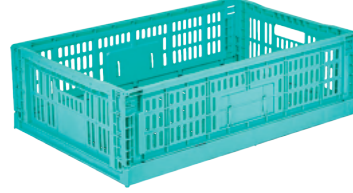
KTX-3405



KTX-5405



KTX-6405



KTX-6401



KTX-6255



KTX-6251



KT-6416



KT-6418



KT-6420



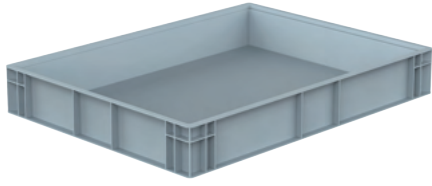
KT-6422



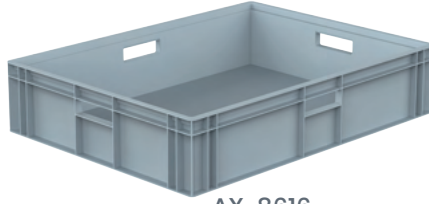
ÜRÜN KODU PRODUCT CODE	DIŞ ÖLÇÜ EXTERNAL DIMENSION		İÇ ÖLÇÜ INTERNAL DIMENSIONS			KATLANMIŞ YÜKSEKLİK FOLDED HEIGH	PALET ADET PALLET QTY 100x120	40HC ADET 40HC QTY	TIR ADET TRUCK QTY	ORJİNAL ORIGINAL	GERİ DÖNÜŞÜM RECYCLE
	Yük / H	Yük / H	Yük / H	Yük / H	Yük / H						
KTX-1701	170 x 265	105 mm	155 x 245	98 mm	27 mm	1680	36960	43680			
KTX-1705	170 x 265	105 mm	155 x 245	98 mm	27 mm	1680	36960	43680			
KTX-3401	300 x 400	145 mm	278 x 376	138 mm	30 mm	750	16500	19500			
KTX-3405	300 x 400	145 mm	278 x 376	138 mm	30 mm	750	16500	19500			
KTX-5405	300 x 495	185 mm	277 x 475	150 mm	30 mm	450	9900	11700			
KTX-6405	395 x 595	185 mm	370 x 565	153 mm	32 mm	200	4400	5200			
KTX-6401	395 x 595	185 mm	370 x 565	153 mm	55 mm	200	4400	5200			
KTX-6255	395 x 595	250 mm	370 x 565	190 mm	55 mm	200	4400	5200			
KT-6251	395 x 595	250 mm	370 x 565	238 mm	55 mm	200	4400	5200			
KT-6416	400 x 600	157 mm	372 x 573	153 mm	32 mm	250	5500	6500			
KT-6418	400 x 600	177 mm	372 x 573	173 mm	32 mm	250	5500	6500			
KT-6420	400 x 600	197 mm	372 x 573	193 mm	32 mm	250	5500	6500			
KT-6422	400 x 600	230 mm	375 x 585	205 mm	32 mm	250	5500	6500			

600 X 800 MM KASALAR

600 X 800 MM CRATES



AX-8611



AX-8616



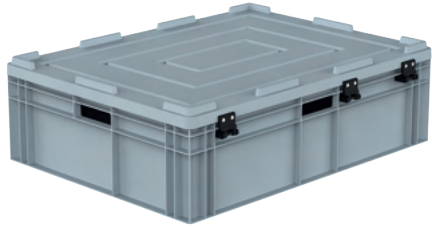
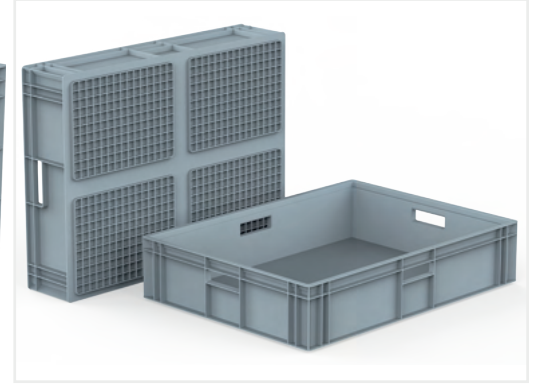
AX-8622



AX-8633



AX-8644



AX-8622-MK



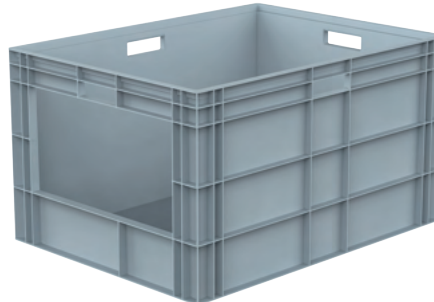
AX-8633-MK



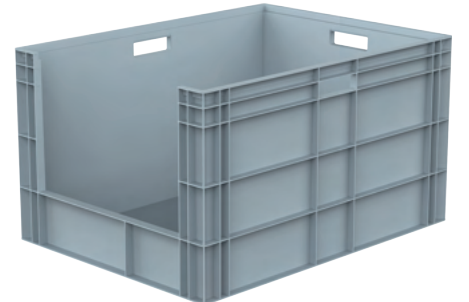
AX-8644-MK



AX-8633 AV



AX-8644-AVK



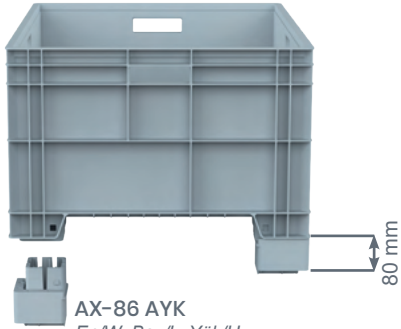
AX-8644 AV

ÜRÜN KODU PRODUCT CODE	DIŞ ÖLÇÜ EXTERNAL DIMENSION Yük / H	İÇ ÖLÇÜ INTERNAL DIMENSIONS Yük / H	PALET ADET PALLET QTY 80x120	40HC ADET 40HC QTY	TIR ADET TRUCK QTY	ORJİNAL ORIGINAL	GERİ DÖNÜŞÜM RECYCLE	
AX-8611	600 x 800	119 mm	559 x 753	107 mm	40	960	1320	
AX-8616		174 mm	555 x 750	162 mm	28	672	924	
AX-8622		230 mm	555 x 750	215 mm	20	480	660	
AX-8633		340 mm	555 x 750	325 mm	14	336	462	
AX-8644		450 mm	552 x 747	435 mm	14	336	462	
AX-8622-MK		250 mm	555 x 750	215 mm	20	480	660	
AX-8633-MK		360 mm	555 x 750	325 mm	14	336	462	
AX-8644-MK		450 mm	555 x 750	435 mm	10	240	330	
AX-8633 AV		340 mm	555 x 750	325 mm	14	336	462	
AX-8644-AVK		450 mm	555 x 750	435 mm	14	336	462	
AX-8644 AV		450 mm	552 x 747	435 mm	14	336	462	

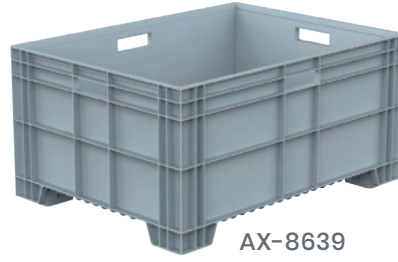
600 X 800 MM KASALAR

600 X 800 MM CRATES

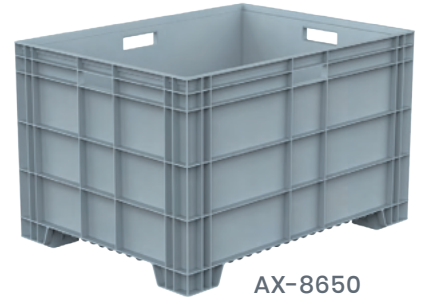
AX-8650 ve AX-8639 uyumlu 80 mm yükseltme takozu, transpalet ve forkliftle kullanılmasını sağlar. 80 mm rising wedges are compatible with AX-8650 and AX-8639 and are used to make crates compatible with transpallet and forklift



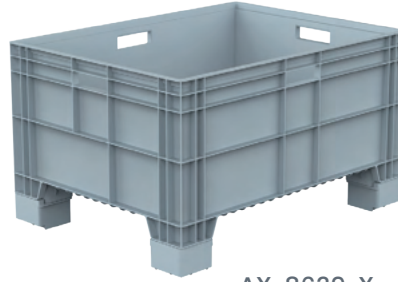
AX-86 AYK
En/W Boy/L Yük/H
60 x 50 x 80 mm



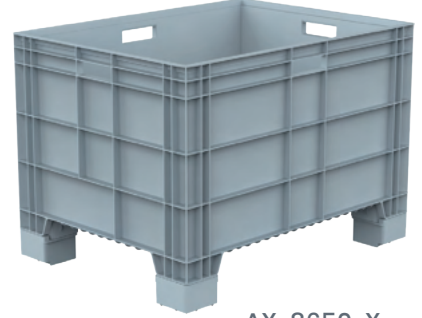
AX-8639



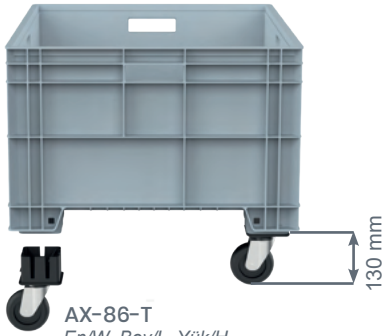
AX-8650



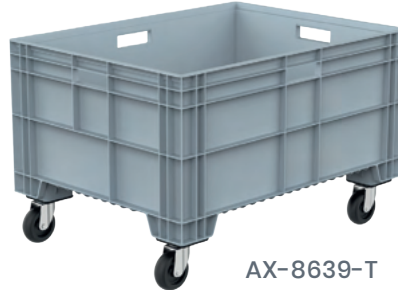
AX-8639-X



AX-8650-X



AX-86-T
En/W Boy/L Yük/H
60 x 50 x 130 mm



AX-8639-T

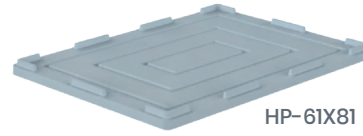


AX-8650-T

AX-8650 ve AX-8639 uyumlu teker.
Compatible wheels for AX-8650 and Ax-8639



En/W Boy/L Yük/H
DOLLY-6080 620 x 820 x 160 mm
600 X 800 Plastik kasa taşıma arabası
600 X 800 mm Plastic dolly



En/W Boy/L Yük/H
HP-61X81 620 x 820 x 20 mm
600X800 mm Kasalara uyumlu kapak
Lid for 600X810 mm Crates



AX-8650-A



AX-8650-AT

ÜRÜN KODU PRODUCT CODE	DIŞ ÖLÇÜ EXTERNAL DIMENSION Yük / H	İÇ ÖLÇÜ INTERNAL DIMENSIONS Yük / H	PALET ADET PALLET QTY 100x120 80x120	40HC ADET 40HC QTY	TIR ADET TRUCK QTY	ORJİNAL ORIGINAL	GERİ DÖNÜŞÜM RECYCLE
AX-8639	600 x 800	390 mm	565 x 760	330 mm	18	432	594
AX-8650		500 mm	565 x 760	435 mm	14	336	462
AX-8639-X		470 mm	565 x 760	330 mm	14	336	462
AX-8650-X		580 mm	565 x 760	435 mm	10	240	330
AX-8639-T		520 mm	565 x 770	330 mm	10	240	330
AX-8650-T		630 mm	565 x 760	435 mm	8	192	264
AX-8650-A		500 mm	565 x 760	435 mm	14	336	462
AX-8650-AT		633 mm	565 x 760	435 mm	8	192	264

KAPALI KONTEYNERLER

CLOSED CONTAINERS



KONTEK-3200-K

En/W Boy/L Yük/H
Dış / Ext 800 x 800 x 760 mm
İç / İnt 570 x 750 x 600 mm

KONTEK-3200-KT

En/W Boy/L Yük/H
Dış / Ext 800 x 800 x 885 mm
İç / İnt 570 x 750 x 600 mm

KONTEK-2500-K

En/W Boy/L Yük/H
Dış / Ext 430 x 1010 x 600 mm
İç / İnt 390 x 945 x 535 mm

KONTEK-2500-KT

En/W Boy/L Yük/H
Dış / Ext 430 x 1010 x 730 mm
İç / İnt 390 x 945 x 535 mm



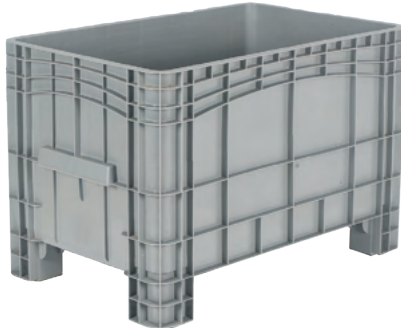
K-2900-K

En/W Boy/L Yük/H
Dış / Ext 660 x 1000 x 695 mm
İç / İnt 610 x 950 x 560 mm



K-2900-KT

En/W Boy/L Yük/H
Dış / Ext 660 x 1000 x 825 mm
İç / İnt 610 x 950 x 560 mm



K-400

En/W Boy/L Yük/H	Hacim	Dynamic	Static
Dış / Ext 636 x 1017 x 673 mm	Volume	Capacity	Capacity
İç / İnt 585 x 932 x 512 mm	270 Lt	300 Kg	1800 Kg
Kapalı / Closed	Ağırlık / Weight	12,00 kg	



K-400-MK

En/W Boy/L Yük/H	Hacim	Dynamic	Static
Dış / Ext 636 x 1017 x 730 mm	Volume	Capacity	Capacity
İç / İnt 585 x 932 x 512 mm	270 Lt	300 Kg	1800 Kg
Kapalı / Closed	Ağırlık / Weight	14,50 kg	



K-400-T

En/W Boy/L Yük/H	Hacim	Dynamic	Static
Dış / Ext 636 x 1017 x 790 mm	Volume	Capacity	Capacity
İç / İnt 585 x 932 x 512 mm	270 Lt	300 Kg	1800 Kg
Kapalı / Closed	Ağırlık / Weight	13,00 kg	



K-400-T-MK

En/W Boy/L Yük/H	Hacim	Dynamic	Static
Dış / Ext 636 x 1017 x 850 mm	Volume	Capacity	Capacity
İç / İnt 585 x 932 x 512 mm	270 Lt	300 Kg	1800 Kg
Kapalı / Closed	Ağırlık / Weight	15,50 kg	

KAPALI KONTEYNERLER

CLOSED CONTAINERS



K-330 *En/W Boy/L Yük/H*
Dış / Ext 670 x 930 x 625 mm
İç / Int 620 x 890 x 520 mm



K-330 T *En/W Boy/L Yük/H*
Dış / Ext 670 x 930 x 770 mm
İç / Int 620 x 890 x 520 mm



K-525 *En/W Boy/L Yük/H*
Dış / Ext 796 x 1195 x 565 mm
İç / Int 736 x 1135 x 430 mm



K-525-T *En/W Boy/L Yük/H*
Dış / Ext 796 x 1195 x 730 mm
İç / Int 736 x 1135 x 430 mm



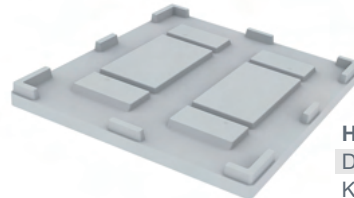
K-550	<i>En/W Boy/L Yük/H</i>	Hacim	Dynamic	Static
Dış / Ext	800 x 1200 x 800 mm	Volume	Capacity	Capacity
İç / Int	732 x 1106 x 617 mm	500 Lt	400 Kg	2500 Kg
Kapalı / Closed	Ağırlık / Weight	22,00 kg		



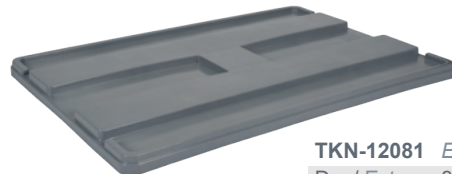
K-550-T	<i>En/W Boy/L Yük/H</i>	Hacim	Dynamic	Static
Dış / Ext	800 x 1200 x 925 mm	Volume	Capacity	Capacity
İç / Int	732 x 1106 x 617 mm	500 Lt	400 Kg	2500 Kg
Kapalı / Closed	Ağırlık / Weight	22,50 kg		



TEKNE-5600-KP	<i>En/W Boy/L Yük/H</i>	Hacim
Dış / Ext	800 x 1200 x 805 mm	Volume
İç / Int	735 x 1111 x 645 mm	526 Lt
Kapalı / Closed	Ağırlık / Weight	26,00 Kg



HP-82x120 *En/W Boy/L Yük/H*
Dış / Ext 805 x 1270 x 60 mm
K-550 uyumlu kapak
Lid for K-550



TKN-12081 *En/W Boy/L Yük/H*
Dış / Ext 800 x 1200 x 805 mm
TEKNE-5600-KP uyumlu kapak
Lid for TEKNE-5600-KP

KAPALI KONTEYNERLER

CLOSED CONTAINERS



K-6500-K	<i>En/W Boy/L Yük/H</i>	Hacim	Dynamic	Static
Dış / Ext	1000 x 1200 x 580 mm	Volume	Capacity	Capacity
İç / İnt	920 x 1120 x 430 mm	450 Lt	700 Kg	4000 Kg
Kapalı / Closed	Ağırlık / Weight	29,50 kg		



K-6500-KT	<i>En/W Boy/L Yük/H</i>	Hacim	Dynamic	Static
Dış / Ext	1000 x 1200 x 730 mm	Volume	Capacity	Capacity
İç / İnt	920 x 1120 x 430 mm	450 Lt	700 Kg	1000 Kg
Kapalı / Closed	Ağırlık / Weight	34,00 kg		



K-6600-K	<i>En/W Boy/L Yük/H</i>	Hacim	Dynamic	Static
Dış / Ext	1000 x 1200 x 760 mm	Volume	Capacity	Capacity
İç / İnt	920 x 1120 x 610 mm	450 Lt	700 Kg	4000 Kg
Kapalı / Closed	Ağırlık / Weight	36,00 kg		



K-6600-KT	<i>En/W Boy/L Yük/H</i>	Hacim	Dynamic	Static
Dış / Ext	1000 x 1200 x 910 mm	Volume	Capacity	Capacity
İç / İnt	920 x 1120 x 610 mm	625 Lt	700 Kg	1000 Kg
Kapalı / Closed	Ağırlık / Weight	41,00 kg		



K-6700-K	<i>En/W Boy/L Yük/H</i>	Hacim	Dynamic	Static
Dış / Ext	1000 x 1200 x 850 mm	Volume	Capacity	Capacity
İç / İnt	920 x 1120 x 700 mm	720 Lt	700 Kg	4000 Kg
Kapalı / Closed	Ağırlık / Weight	38,00 kg		



K-6700-KT	<i>En/W Boy/L Yük/H</i>	Hacim	Dynamic	Static
Dış / Ext	1000 x 1200 x 1000 mm	Volume	Capacity	Capacity
İç / İnt	920 x 1120 x 700 mm	720 Lt	700 Kg	1000 Kg
Kapalı / Closed	Ağırlık / Weight	43,00 kg		

DELİKLİ KONTEYNERLER PERFORATED CONTAINERS



K-6500-A	En/W Boy/L Yük/H	Hacim	Dynamic	Static
Dış / Ext	1000 x 1200 x 580 mm	Volume	Capacity	Capacity
İç / Int	920 x 1120 x 430 mm	450 Lt	700 Kg	4000 Kg
Delikli / Perforated	Ağırlık / Weight	28,00 kg		



K-6500-AT	En/W Boy/L Yük/H	Hacim	Dynamic	Static
Dış / Ext	1000 x 1200 x 730 mm	Volume	Capacity	Capacity
İç / Int	920 x 1120 x 430 mm	450 Lt	700 Kg	1000 Kg
Delikli / Perforated	Ağırlık / Weight	33,00 kg		



K-6600-A	En/W Boy/L Yük/H	Hacim	Dynamic	Static
Dış / Ext	1000 x 1200 x 760 mm	Volume	Capacity	Capacity
İç / Int	920 x 1120 x 610 mm	625 Lt	700 Kg	4000 Kg
Delikli / Perforated	Ağırlık / Weight	34,00 kg		



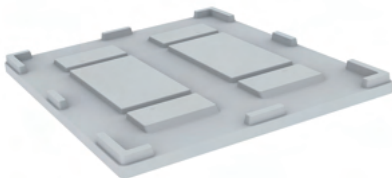
K-6600-AT	En/W Boy/L Yük/H	Hacim	Dynamic	Static
Dış / Ext	1000 x 1200 x 910 mm	Volume	Capacity	Capacity
İç / Int	920 x 1120 x 610 mm	625 Lt	700 Kg	1000 Kg
Delikli / Perforated	Ağırlık / Weight	39,00 kg		



K-6700-A	En/W Boy/L Yük/H	Hacim	Dynamic	Static
Dış / Ext	1000 x 1200 x 850 mm	Volume	Capacity	Capacity
İç / Int	920 x 1120 x 700 mm	720 Lt	700 Kg	4000 Kg
Delikli / Perforated	Ağırlık / Weight	36,00 kg		



K-6700-AT	En/W Boy/L Yük/H	Hacim	Dynamic	Static
Dış / Ext	1000 x 1200 x 1000 mm	Volume	Capacity	Capacity
İç / Int	920 x 1120 x 700 mm	720 Lt	700 Kg	1000 Kg
Delikli / Perforated	Ağırlık / Weight	41,00 kg		



HP-102X120	En/W Boy/L Yük/H
Dış / Ext	1020 x 1200 x 60 mm
K-6500, K-6600 ve K-6700 Uyumlu Kapak Lid for K-6500, K-6600 and K-6700	

+/- % 3 toleranslıdır / +/- 3% tolerance

KATLANIR KONTEYNERLER

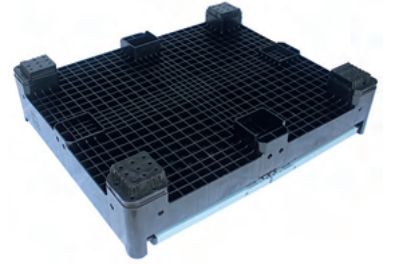
FOLDING CONTAINERS



KT-1210-A	En/W Boy/L Yük/H	Hacim	Dynamic	Static
Dış / Ext	1000 x 1200 x 800 mm	Volume	Capacity	Capacity
İç / Int	920 x 1120 x 650 mm	670 Lt	500 Kg	5000 Kg
Katlanmış Yükseklik / Folded Height	290 mm			
Delikli / Perforated	Ağırlık / Weight	41 kg+/- %3		



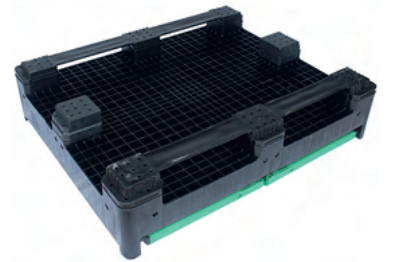
KT-1210-K	En/W Boy/L Yük/H	Hacim	Dynamic	Static
Dış / Ext	1000 x 1200 x 800 mm	Volume	Capacity	Capacity
İç / Int	920 x 1120 x 650 mm	670 Lt	500 Kg	5000 Kg
Katlanmış Yükseklik / Folded Height	290 mm			
Kapalı / Closed	Ağırlık / Weight	42 kg+/- %3		



Standart 4 Ayak
Standard 4 Feet



KT-1212-A	En/W Boy/L Yük/H	Hacim	Dynamic	Static
Dış / Ext	1200 x 1200 x 800 mm	Volume	Capacity	Capacity
İç / Int	1120 x 1120 x 650 mm	820 Lt	500 Kg	5000 Kg
Katlanmış Yükseklik / Folded Height	290 mm			
Delikli / Perforated	Ağırlık / Weight	44 kg+/- %3		



Aksesuar 2 Kızak
Optional 2 Runners



KT-1212-K	En/W Boy/L Yük/H	Hacim	Dynamic	Static
Dış / Ext	1200 x 1200 x 800 mm	Volume	Capacity	Capacity
İç / Int	1120 x 1120 x 650 mm	820 Lt	500 Kg	5000 Kg
Katlanmış Yükseklik / Folded Height	290 mm			
Kapalı / Closed	Ağırlık / Weight	45 kg+/- %3		



Aksesuar Flap Kapak
Optional Flap

+/- % 3 toleranslıdır / +/- 3% tolerance

www.hipas.com.tr

KATLANIR KONTEYNERLER

FOLDING CONTAINERS



4 Ayak / 4 Feet



4 Ayak / 4 Feet



2 Kızak / 2 Skid



2 Kızak / 2 Skid

KT-1208-80	<i>En/W Boy/L Yük/H</i>
Dış / Ext	800 x 1200 x 800 mm
İç / Int	720 x 1120 x 630 mm
Katlanmış Yük. / Folded Height	344 mm

KT-1210-80	<i>En/W Boy/L Yük/H</i>
Dış / Ext	1000 x 1200 x 805 mm
İç / Int	920 x 1120 x 635 mm
Katlanmış Yük. / Folded Height	349 mm

KT-1208-95	<i>En/W Boy/L Yük/H</i>
Dış / Ext	800 x 1200 x 950 mm
İç / Int	720 x 1120 x 780 mm
Katlanmış Yük. / Folded Height	344 mm

KT-1210-975	<i>En/W Boy/L Yük/H</i>
Dış / Ext	1000 x 1200 x 975 mm
İç / Int	920 x 1120 x 805 mm
Katlanmış Yük. / Folded Height	349 mm



Flap Kapak / Flap Lid

+/- % 3 toleranslıdır / +/- 3% tolerance

www.hipas.com.tr

TEKYÖN PALETLER

ONE-WAY PALLETS



80-120-A EKO KZ

3 kızak / 3 skid

En/W Boy/L Yük/H

800 x 1200 x 150 mm

Static
Capacity

2000 Kg

Dynamic
Capacity

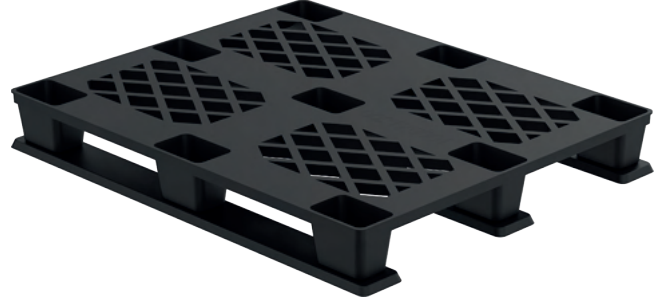
1250 Kg

Raf
Capacity

300 Kg

Ağırlık
Weight

9,40 Kg +/- %3



100-120-A EKO KZ

3 kızak / 3 skid

En/W Boy/L Yük/H

1000 x 1200 x 150 mm

Static
Capacity

2000 Kg

Dynamic
Capacity

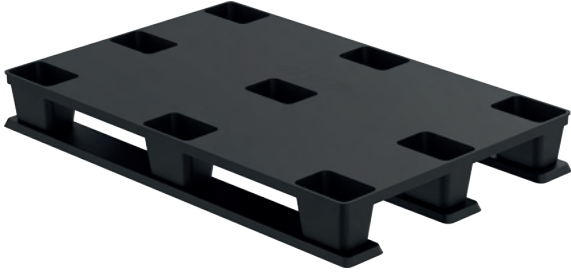
1250 Kg

Raf
Capacity

300 Kg

Ağırlık
Weight

10,80 Kg +/- %3



80-120-K EKO KZ

3 kızak / 3 skid

En/W Boy/L Yük/H

800 x 1200 x 150 mm

Static
Capacity

2000 Kg

Dynamic
Capacity

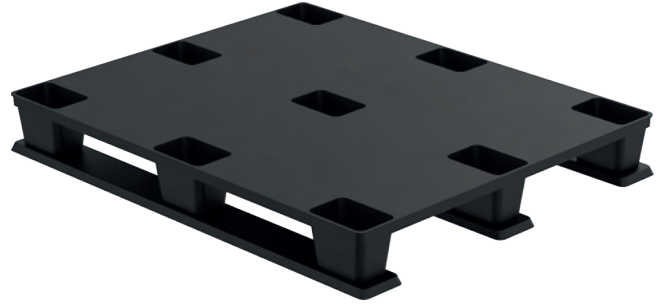
1250 Kg

Raf
Capacity

300 Kg

Ağırlık
Weight

10,20 Kg +/- %3



100-120-K EKO KZ

3 kızak / 3 skid

En/W Boy/L Yük/H

1000 x 1200 x 150 mm

Static
Capacity

2500 Kg

Dynamic
Capacity

1250 Kg

Raf
Capacity

300 Kg

Ağırlık
Weight

12,40 Kg +/- %3



EKO KZ

80-120-A EKO KZ, 100-120-A EKO KZ

80-120-K EKO KZ, 100-120-K EKO KZ

Paletler ile uyumludur

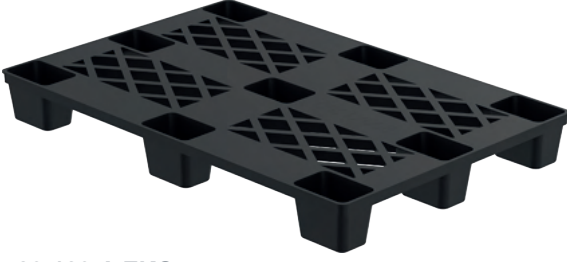
Compatible with

Belirtilen taşıma değerleri yalnızca orijinal kalite ürünler için geçerlidir.
The stated carrying capacities are valid only for original quality products.

+/- % 3 toleranslıdır
+/- 3% tolerance

TEKYÖN PALETLER

ONE-WAY PALLETS



80-120-A EKO

9 ayak / 9 feet

En/W Boy/L Yük/H

800 x 1200 x 134 mm

Static
Capacity

1800 Kg

Dynamic
Capacity

900 Kg

Ağırlık
Weight

7,00 Kg



100-120-A EKO

9 ayak / 9 feet

En/W Boy/L Yük/H

1000 x 1200 x 134 mm

Static
Capacity

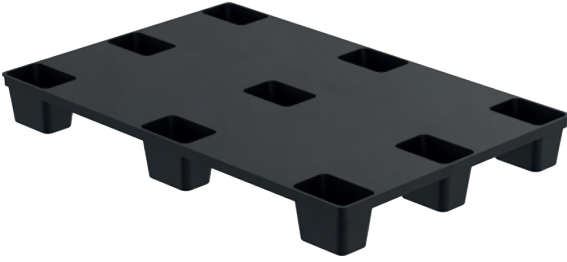
1800 Kg

Dynamic
Capacity

900 Kg

Ağırlık
Weight

8,40 Kg



80-120-K EKO

9 ayak / 9 feet

En/W Boy/L Yük/H

800 x 1200 x 134 mm

Static
Capacity

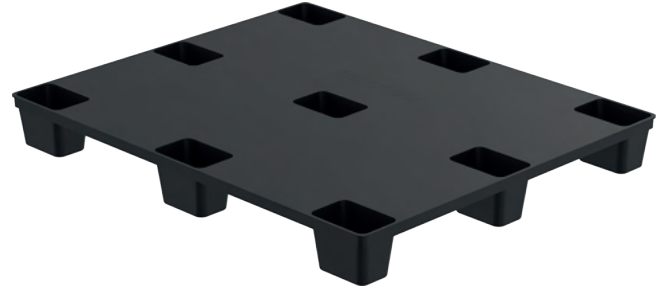
2000 Kg

Dynamic
Capacity

1000 Kg

Ağırlık
Weight

9,50 Kg



100-120-K EKO

9 ayak / 9 feet

En/W Boy/L Yük/H

1000 x 1200 x 134 mm

Static
Capacity

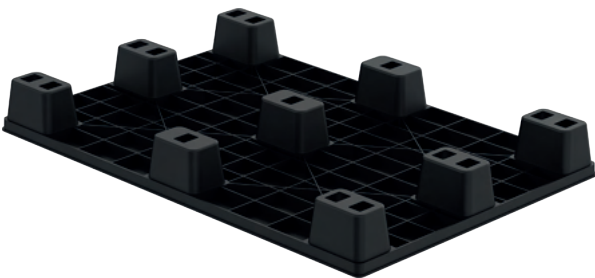
2000 Kg

Dynamic
Capacity

1000 Kg

Ağırlık
Weight

10,00 Kg



Belirtilen taşıma değerleri yalnızca orijinal kalite ürünler için geçerlidir.
The stated carrying capacities are valid only for original quality products.

+/- % 3 toleranslıdır
+/- 3% tolerance

TEKYÖN PALETLER

ONE-WAY PALLETS



80-120 XE
9 ayak / 9 feet

<i>En/W Boy/L Yük/H</i>	Static Capacity	Dynamic Capacity	Ağırlık Weight
800 x 1200 x 130 mm	450 Kg	300 Kg	4,00 Kg



80-120 XEP
9 ayak / 9 feet

<i>En/W Boy/L Yük/H</i>	Static Capacity	Dynamic Capacity	Ağırlık Weight
800 x 1200 x 130 mm	700 Kg	400 Kg	5,20 Kg



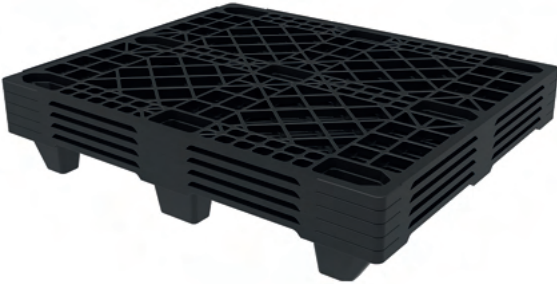
100-120 XE
9 ayak / 9 feet

<i>En/W Boy/L Yük/H</i>	Static Capacity	Dynamic Capacity	Ağırlık Weight
1000 x 1200 x 130 mm	450 Kg	300 Kg	4,70 Kg



100-120 XEP
9 ayak / 9 feet

<i>En/W Boy/L Yük/H</i>	Static Capacity	Dynamic Capacity	Ağırlık Weight
1000 x 1200 x 130 mm	700 Kg	400 Kg	6,20 Kg



Kızak 120 / SKID 120

80-120 XE, 80-120 XEP, 100-120 XE
100-120 XEP, Paletler ile uyumludur
Compatible with 80-120 XE, 80-120
XEP, 100-120 XE 100-120 XEP, Pallets

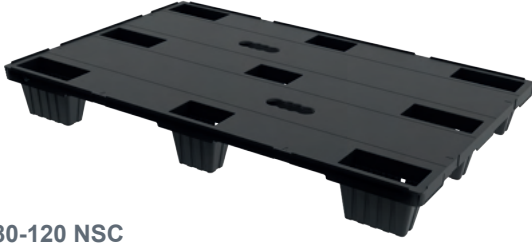


Belirtilen taşıma değerleri yalnızca orijinal kalite ürünler için geçerlidir.
The stated carrying capacities are valid only for original quality products.

+/- % 3 toleranslıdır
+/- 3% tolerance

TEKYÖN PALETLER

ONE-WAY PALLETS



80-120 NSC
kapalı / closed
9 ayak / 9 feet

En/W Boy/L Yük/H	Static Capacity	Dynamic Capacity
800 x 1200 x 140 mm	2000 Kg	1000 Kg
Ağırlık / Weight	6,30 Kg	



80-120 NS
üstü delikli / perforated
9 ayak / 9 feet

En/W Boy/L Yük/H	Static Capacity	Dynamic Capacity
800 x 1200 x 140 mm	2000 Kg	1000 Kg
Ağırlık / Weight	5,10 Kg	



1208-PR5
80-120 NS-NSC alt kızak ve palet seperatörü
80-120 NS-NSC bottom skid and pallet separator

En/W Boy/L Yük/H	Ağırlık / Weight
800 x 1200 x 20 mm	2,60 Kg



1208-PR6
80-120 NS-NSC alt kızak ve palet seperatörü
80-120 NS-NSC bottom skid and pallet separator

En/W Boy/L Yük/H	Ağırlık / Weight
800 x 1200 x 20 mm	2,80 Kg



100-120 NSC
kapalı / closed
9 ayak / 9 feet

En/W Boy/L Yük/H	Static Capacity	Dynamic Capacity
1000 x 1200 x 140 mm	2000 Kg	1000 Kg
Ağırlık / Weight	7,80 Kg	



100-120 NS
üstü delikli / perforated
9 ayak / 9 feet

En/W Boy/L Yük/H	Static Capacity	Dynamic Capacity
1000 x 1200 x 140 mm	2000 Kg	1000 Kg
Ağırlık / Weight	6,10 Kg	



1210-PR5
100-120 NS-NSC alt kızak ve palet seperatörü
100-120 NS-NSC bottom skid and pallet separator

En/W Boy/L Yük/H	Ağırlık / Weight
1000 x 1200 x 20 mm	2,80 Kg



1210-PR6
100-120 NS-NSC alt kızak ve palet seperatörü
80-120 NS-NSC bottom skid and pallet separator

En/W Boy/L Yük/H	Ağırlık / Weight
1000 x 1200 x 20 mm	3,10 Kg

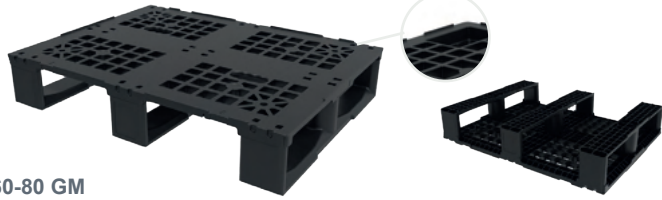


Belirtilen taşıma değerleri yalnızca orijinal kalite ürünler için geçerlidir.
The stated carrying capacities are valid only for original quality products.

+/- % 3 toleranslıdır
+/- 3% tolerance

600 X 800 MM & 600 X 800 MM PALETLER

600 X 800 MM & 600 X 800 MM PALLETS



60-80 GM üstü delikli / perforated 3 kızak / 3 skid En/W Boy/L Yük/H	Static Capacity	Dynamic Capacity
600 x 800 x 140 mm	500 Kg	1500 Kg
Ağırlık / Weight	5,00 Kg	



60-80 GP üstü kapalı / closed 3 kızak / 3 skid En/W Boy/L Yük/H	Static Capacity	Dynamic Capacity
600 x 800 x 140 mm	500 Kg	1500 Kg
Ağırlık / Weight	5,40 Kg	

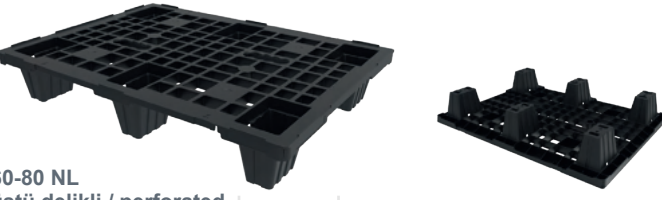
Tırnaklı veya tırnaksız üretilmektedir.
It is manufactured with or without rims.



60-80 RT üstü delikli / perforated 3 kızak / 3 skid En/W Boy/L Yük/H	Static Capacity	Dynamic Capacity
600 x 800 x 160 mm	750 Kg	2000 Kg
Ağırlık / Weight	7,50 Kg	



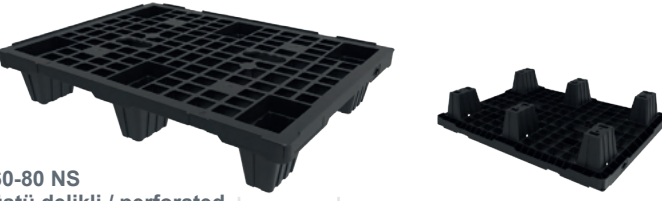
60-80 RPC üstü delikli / perforated 3 kızak / 3 skid En/W Boy/L Yük/H	Static Capacity	Dynamic Capacity
600 x 800 x 160 mm	750 Kg	2000 Kg
Ağırlık / Weight	7,50 Kg	



60-80 NL üstü delikli / perforated 6 ayak / 6 feet En/W Boy/L Yük/H	Static Capacity	Dynamic Capacity
600 x 800 x 130 mm	250 Kg	2000 Kg
Ağırlık / Weight	2,30 Kg	



60-80 NLC kapalı / closed 6 ayak / 6 feet En/W Boy/L Yük/H	Static Capacity	Dynamic Capacity
600 x 800 x 130 mm	250 Kg	5000 Kg
Ağırlık / Weight	2,80 Kg	

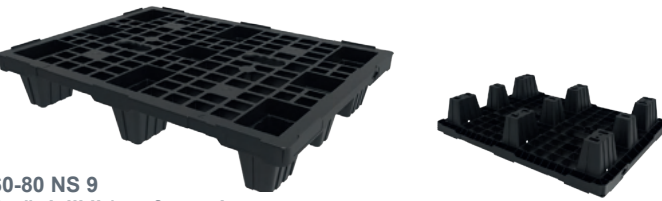


60-80 NS üstü delikli / perforated 6 ayak / 6 feet En/W Boy/L Yük/H	Static Capacity	Dynamic Capacity
600 x 800 x 140 mm	1000 Kg	500 Kg
Ağırlık / Weight	3,00 Kg	



60-80 NSC kapalı / closed 6 ayak / 6 feet En/W Boy/L Yük/H	Static Capacity	Dynamic Capacity
600 x 800 x 140 mm	1500 Kg	500 Kg
Ağırlık / Weight	3,50 Kg	

60-80 NSC
kapak / cover



60-80 NS 9 üstü delikli / perforated 9 ayak / 9 feet En/W Boy/L Yük/H	Static Capacity	Dynamic Capacity
600 x 800 x 140 mm	1500 Kg	750 Kg
Ağırlık / Weight	3,30 Kg	



60-80 NSC 9 kapalı / closed 9 ayak / 9 feet En/W Boy/L Yük/H	Static Capacity	Dynamic Capacity
600 x 800 x 140 mm	1500 Kg	750 Kg
Ağırlık / Weight	3,80 Kg	



40-60 NL üstü delikli / perforated 4 ayak / 4 feet En/W Boy/L Yük/H	Static Capacity	Dynamic Capacity
400 x 600 x 130 mm	500 Kg	150 Kg
Ağırlık / Weight	1,20 Kg	



40-60 NLC kapalı / closed 4 ayak / 4 feet En/W Boy/L Yük/H	Static Capacity	Dynamic Capacity
400 x 600 x 130 mm	500 Kg	150 Kg
Ağırlık / Weight	1,40 Kg	

Standart tırnak / Standart rim

Uzun tırnak / Perimeter rim

Belirtilen taşıma değerleri yalnızca orijinal kalite ürünler için geçerlidir.
The stated carrying capacities are valid only for original quality products.

+/- % 3 toleranslıdır
+/- 3% tolerance

PLASTİK PALETLER

PLASTİK PALLETS



80-120 A

Üstü Delikli / Perforated
2 kızak / 2 skid

En/W Boy/L Yük/H

800 x 1200 x 150 mm

Static Capacity	Dynamic Capacity	Raf Capacity
3000 Kg	1000 Kg	600 Kg



80-120

Kapalı / Closed
2 kızak / 2 skid

En/W Boy/L Yük/H

800 x 1200 x 150 mm

Static Capacity	Dynamic Capacity	Raf Capacity
3000 Kg	1000 Kg	600 Kg



100-120 A

Üstü Delikli / Perforated
2 kızak / 2 skid

En/W Boy/L Yük/H

1000 x 1200 x 150 mm

Static Capacity	Dynamic Capacity	Raf Capacity
2500 Kg	1000 Kg	600 Kg



100-120 K

Kapalı / Closed
2 kızak / 2 skid

En/W Boy/L Yük/H

1000 x 1200 x 150 mm

Static Capacity	Dynamic Capacity	Raf Capacity
2500 Kg	1000 Kg	600 Kg



80-120 3K

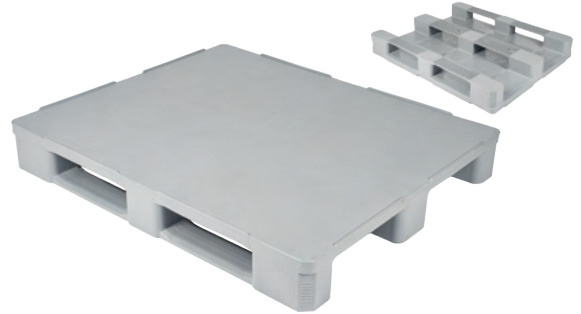
Kapalı / Closed
3 kızak / 3 skid

En/W Boy/L Yük/H

800 x 1200 x 150 mm

Static Capacity	Dynamic Capacity	Raf Capacity
3000 Kg	1200 Kg	700 Kg

Ağırlık / Weight 12,00 Kg



100-120 3K

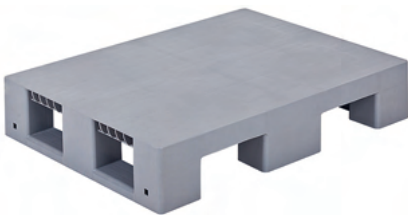
Kapalı / Closed
3 kızak / 3 skid

En/W Boy/L Yük/H

1000 x 1200 x 150 mm

Static Capacity	Dynamic Capacity	Raf Capacity
4000 Kg	900 Kg	900 Kg

Ağırlık / Weight 14,00 Kg



60-80 K

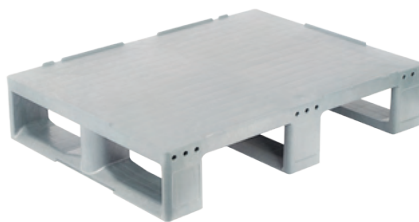
2 kızak / 2 skid

En/W Boy/L Yük/H

600 x 800 x 150 mm

Static Capacity	Dynamic Capacity
2000 Kg	500 Kg

Ağırlık / Weight 5,40 Kg



60-80 3K

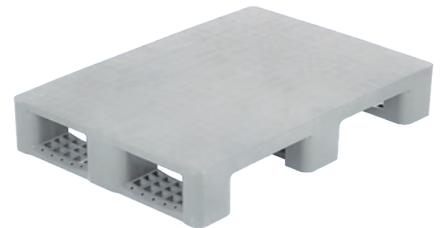
3 kızak / 3 skid

En/W Boy/L Yük/H

600 x 800 x 160 mm

Static Capacity	Dynamic Capacity
1800 Kg	500 Kg

Ağırlık / Weight 5,60 Kg



70-100 K

2 kızak / 2 skid

En/W Boy/L Yük/H

700 x 1000 x 150 mm

Static Capacity	Dynamic Capacity
1000 Kg	500 Kg

Ağırlık / Weight 8,45 Kg

Belirtilen taşıma değerleri yalnızca orijinal kalite ürünler için geçerlidir.
The stated carrying capacities are valid only for original quality products.

+/- % 3 toleranslıdır
+/- 3% tolerance

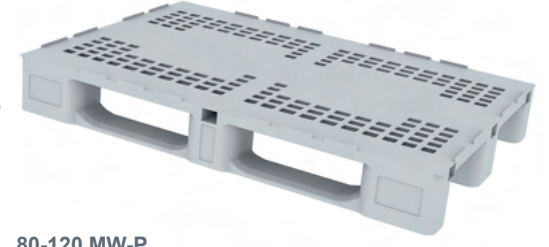
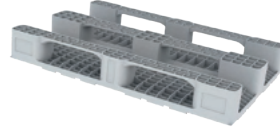
PROFİL YUVALI PALETLER

PROFILE SLOT PALLETS



80-120 MP-P
Profil Yuvalı / Profile Slot
3 kızak / 3 skid

En/W Boy/L Yük/H	Static Capacity	Dynamic Capacity	Raf Capacity
800 x 1200 x 150 mm	5000 Kg	1500 Kg	900 Kg
	Ağırlık / Weight		15.00 Kg



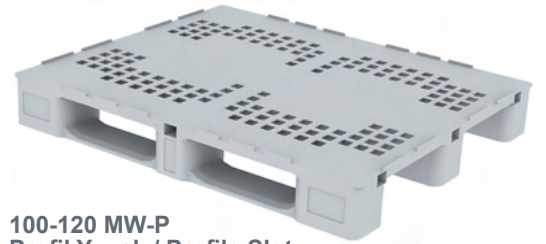
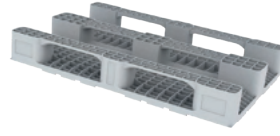
80-120 MW-P
Profil Yuvalı / Profile Slot
3 kızak / 3 skid

En/W Boy/L Yük/H	Static Capacity	Dynamic Capacity	Raf Capacity
800 x 1200 x 150 mm	5000 Kg	1500 Kg	900 Kg
	Ağırlık / Weight		14.00 Kg



100-120 MP-P
Profil Yuvalı / Profile Slot
3 kızak / 3 skid

En/W Boy/L Yük/H	Static Capacity	Dynamic Capacity	Raf Capacity
1000 x 1200 x 155 mm	5000 Kg	1500 Kg	1000 Kg
	Ağırlık / Weight		18.00 Kg



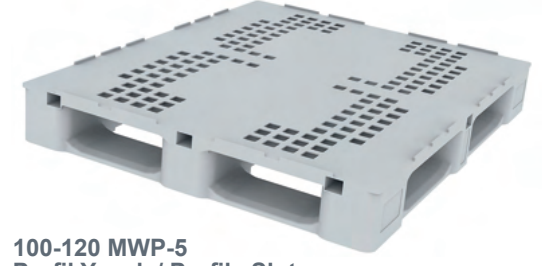
100-120 MW-P
Profil Yuvalı / Profile Slot
3 kızak / 3 skid

En/W Boy/L Yük/H	Static Capacity	Dynamic Capacity	Raf Capacity
1000 x 1200 x 155 mm	5000 Kg	1500 Kg	1000 Kg
	Ağırlık / Weight		17.00 Kg



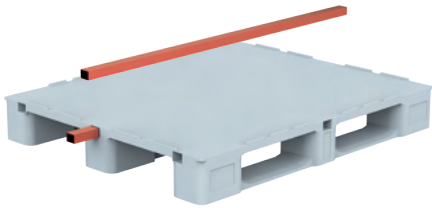
100-120 MPP-5
Profil Yuvalı / Profile Slot
5 kızak / 5 skid

En/W Boy/L Yük/H	Static Capacity	Dynamic Capacity	Raf Capacity
1000 x 1200 x 155 mm	5000 Kg	1500 Kg	1000 Kg
	Ağırlık / Weight		18,50 Kg



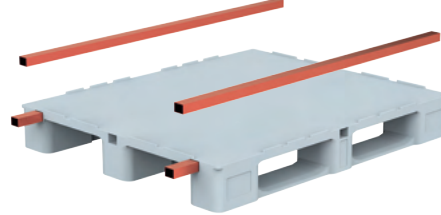
100-120 MWP-5
Profil Yuvalı / Profile Slot
5 kızak / 5 skid

En/W Boy/L Yük/H	Static Capacity	Dynamic Capacity	Raf Capacity
1000 x 1200 x 155 mm	5000 Kg	1500 Kg	1000 Kg
	Ağırlık / Weight		18,50 Kg



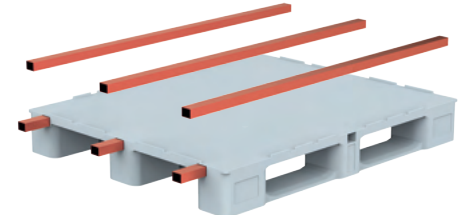
1 Metal Profil Kapasitesi
1 Metal Profil Capacity

Dinamik / Dynamic	1750 Kg
Raf / Rack	1250 Kg



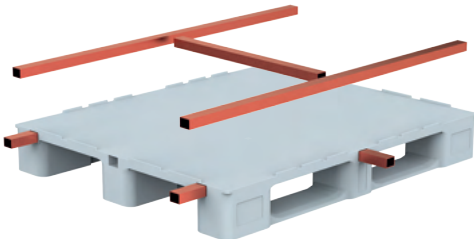
2 Metal Profil Kapasitesi
2 Metal Profil Capacity

Dinamik / Dynamic	2000 Kg
Raf / Rack	1500 Kg



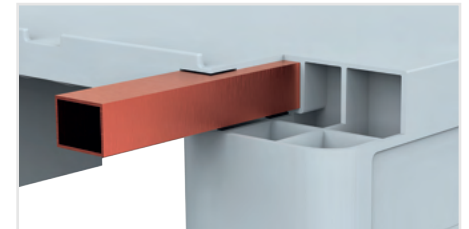
3 Metal Profil Kapasitesi
3 Metal Profil Capacity

Dinamik / Dynamic	2250 Kg
Raf / Rack	1800 Kg



80-120 MWP, 80-120 MPP, 100-120 MWP
 100-120 MPP, 100-120 MWP-5, 100-120-5
H Metal Profil
H Metal Profil

Dinamik / Dynamic	2000 Kg
Raf / Rack	1500 Kg

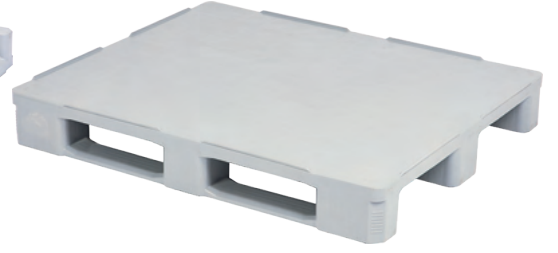
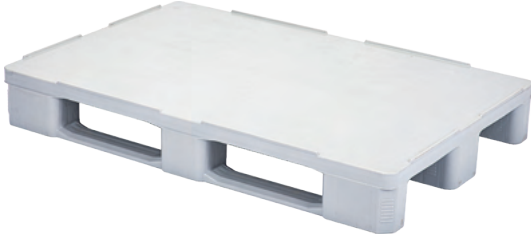


Belirtilen taşıma değerleri yalnızca orijinal kalite ürünler için geçerlidir.
 The stated carrying capacities are valid only for original quality products.

+/- % 3 toleranslıdır
 +/- 3% tolerance

PLASTİK PALETLER

PLASTIC PALLETS



80-120 hij hijyenik / hygienic 3 kızaklı / 3 skid

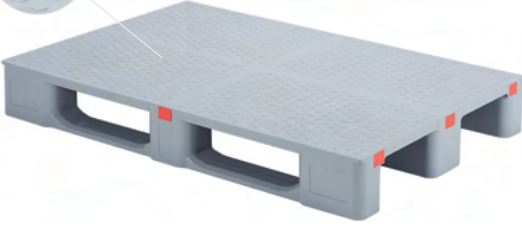
En/W Boy/L Yük/H	Static Capacity	Dynamic Capacity	Raf Capacity
800 x 1200 x 160 mm	5000 Kg	1250 Kg	1000 Kg
	Ağırlık / Weight		18,00 Kg

100-120 hij hijyenik / hygienic 3 kızaklı / 3 skid

En/W Boy/L Yük/H	Static Capacity	Dynamic Capacity	Raf Capacity
1000 x 1200 x 160 mm	7500 Kg	1500 Kg	1250 Kg
	Ağırlık / Weight		21,00 Kg



Pullu yüzey
Scaly surface



TKZ-39 39 x 390 x 70 mm
80-120-MR Uyumlu Takoz
Wedges



80-120 MCP

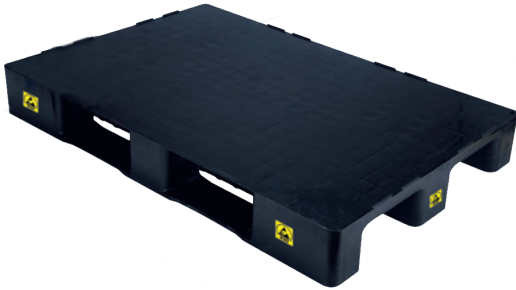
Pullu yüzeyli palet / Scaly surface Pallet 3 kızak / 3 skid

En/W Boy/L Yük/H	Static Capacity	Dynamic Capacity
800 x 1200 x 150 mm	5000 Kg	1500 Kg

80-120 MRP

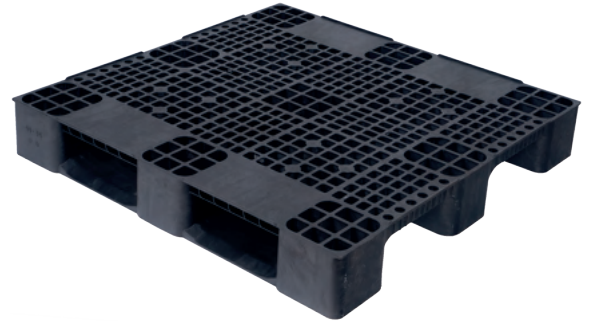
Profil Yapılı / Profile Structure 3 kızak / 3 skid

En/W Boy/L Yük/H	Static Capacity	Dynamic Capacity
800 x 1200 x 150 mm	5000 Kg	1500 Kg



80-120 K ESD 3 kızak / 3 skid

En/W Boy/L Yük/H	Static Capacity	Dynamic Capacity	Raf Capacity
800 x 1200 x 150 mm	3000 Kg	1000 Kg	600 Kg



110-110 A

2 kızak / 2 skid

En/W Boy/L Yük/H	Static Capacity	Dynamic Capacity	Ağırlık Weight
1100 x 1100 x 150 mm	4000 Kg	1500 Kg	13,00 Kg



HP-83X120

En/W Boy/L Yük/H

805 x 1270 x 55 mm

80-120 Paleta uyumlu kapak / Lid for 80-120 Pallet

HP-103X120

En/W Boy/L Yük/H

1050 x 1200 x 65 mm

100-120 Paleta uyumlu kapak / Lid for 100-120 Pallet

Belirtilen taşıma değerleri yalnızca orijinal kalite ürünler için geçerlidir.
The stated carrying capacities are valid only for original quality products.

+/- % 3 toleranslıdır
+/- 3% tolerance

KİMYASAL DÖKÜNTÜ PALETİ

SPILL PALLET



P1-43
En/W Boy/L Yük/H
655 x 655 x 220 mm 43 Lt

Hacim
Volume



P2-157
En/W Boy/L Yük/H
1280 x 647 x 370 mm 157 Lt

Hacim
Volume



P2-245
En/W Boy/L Yük/H
1280 x 647 x 575 mm 245 Lt

Hacim
Volume

IBC kullanımına uygundur
Compatible with IBC applications



P4-235
En/W Boy/L Yük/H
1280 x 1280 x 340 mm 235 Lt

Hacim
Volume



P4-435
En/W Boy/L Yük/H
1280 x 1280 x 515 mm 435 Lt

Hacim
Volume



P-1150
En/W Boy/L Yük/H
1800 x 770 x 1450 mm 1150 Lt

Hacim
Volume



P-1200
En/W Boy/L Yük/H
1280 x 1280 x 1250 mm 1200 Lt

Hacim
Volume



P-530-2Y
En/W Boy/L Yük/H
1250 x 1400 x 480 mm 530 Lt

Hacim
Volume



P-530-4Y
En/W Boy/L Yük/H
1250 x 1400 x 480 mm 530 Lt

Hacim
Volume

Belirtilen taşıma değerleri yalnızca orijinal kalite ürünler için geçerlidir.
The stated carrying capacities are valid only for original quality products.

ÇÖP KOVALARI

WASTE BINS



ÇK-20 25 Lt.
En/W Boy/L Yük/H
Dış / Ext 310 x 350 x 440 mm
Koli Adedi / In Box : 4 Ad / Pcs



ÇK-30 40 Lt.
En/W Boy/L Yük/H
Dış / Ext 360 x 390 x 440 mm
Koli Adedi / In Box : 5 Ad / Pcs



ÇK-65 65 Lt.
En/W Boy/L Yük/H
Dış / Ext 470 x 400 x 630 mm
Koli Adedi / In Box : 5 Ad / Pcs



ÇK-85 85 Lt.
En/W Boy/L Yük/H
Dış / Ext 470 x 450 x 730 mm
Koli Adedi / In Box : 5 Ad / Pcs



ÇK-4280 10 Lt.
En/W Boy/L Yük/H
Dış / Ext 200 x 275 x 350 mm
Koli Adedi / In Box 12 Ad / Pcs



ÇK-4281 15 Lt.
En/W Boy/L Yük/H
Dış / Ext 220 x 320 x 400 mm
Koli Adedi / In Box 12 Ad / Pcs



ÇK-4282 25 Lt.
En/W Boy/L Yük/H
Dış / Ext 260 x 365 x 475 mm
Koli Adedi / In Box 6 Ad / Pcs



ÇK-4283 40 Lt.
En/W Boy/L Yük/H
Dış / Ext 300 x 430 x 550 mm
Koli Adedi / In Box 5 Ad / Pcs



ÇK-4284 60 Lt.
En/W Boy/L Yük/H
Dış / Ext 340 x 480 x 630 mm
Koli Adedi / In Box 5 Ad / Pcs



ÇK-500 240 Lt.
En/W Boy/L Yük/H
Dış / Ext 585 x 730 x 1100 mm



ÇK-600 360 Lt.
En/W Boy/L Yük/H
Dış / Ext 620 x 865 x 1100 mm



ÇK-660 660 Lt.
En/W Boy/L Yük/H
Dış / Ext 1360 x 780 x 1190 mm



ÇK-770 770 Lt.
En/W Boy/L Yük/H
Dış / Ext 1360 x 780 x 1350 mm



ÇK-1100 1100 Lt.
En/W Boy/L Yük/H
Dış / Ext 1360 x 1080 x 1350 mm

ÇÖP KOVALARI WASTE BINS

ÇK-400 Çöp Kovası ÇK-400 Waste Bins

ÇK-400 En/W Boy/L Yüksek
Dış / Ext. 480 x 530 x 990 mm
Hacim / Volume 120 Lt.



ÇK-400 M

ÇK-400 K

ÇK-400 O

ÇK-400 S

ÇK-400 KH

ÇK-400 Si

ÇK-400 G

Farklı Renkli Kapaklar Different colored lids



ÇK-400 GK

ÇK-400 GS

ÇK-400 GM

ÇK-400 GT

ÇK-400 GY

ÇK-400 Sıfır Atık Konteynerleri ÇK-400 Zero Waste Containers



ÇK-400 YCA
CAM ATIK
GLASS WASTE



ÇK-400 OTI
TIBBİ ATIK
MEDICAL WASTE



ÇK-400 KTA
TEHLİKELİ ATIK
DANGEROUS WASTE



ÇK-400 SPA
PLASTİK ATIK
PLASTIC WASTE



ÇK-400 KHO
ORGANİK ATIK
ORGANIC WASTE



ÇK-400 GMA
METAL ATIK
METAL WASTE



ÇK-400 SiG
GERİ DÖNÜŞMEYEN ATIK
NON-RECYCLABLE WASTE



ÇK-400 MKA
KAĞIT ATIK
PAPER WASTE



ÇK-400 P 120 Lt.
Dış / Ext 480 x 530 x 990 mm
Ortadan metal pedallı
Center metal pedal

SIFIR ATIK GERİ DÖNÜŞÜM KOVALARI

ZERO WASTE RECYCLING BINS

Sticker'lı Modeller / Models With Stickers



ÇK-70-CM
CAM
GLASS



ÇK-70-PS
PLASTİK
PLASTIC



ÇK-70-MT
METAL



ÇK-70-KG
KAĞIT
PAPER



ÇK-70-OA
ORGANİK
ORGANIC



ÇK-70-DA
GERİ DÖNÜŞMEYEN ATIK
NON-RECYCLABLE WASTE

ÇK-70 En/W Boy/L Yük/H
Dış / Ext 402 x 362 x 721 mm
70 Lt.



ÇK-1825 4'lü Atık Kovası / Metal waste bins set
En/W Boy/L Yük/H
Dış / Ext 750 x 320 x 640 mm



ÇK-1812 4'lü Atık Kovası / Metal waste bins set
En/W Boy/L Yük/H
Dış / Ext 1150 x 300 x 650 mm



ÇK-1811 3'lü Atık Kovası / Metal waste bins set
En/W Boy/L Yük/H
Dış / Ext 1230 x 420 x 1050 mm



ÇK-1801 Atık Kovası
Metal waste bin
En/W Yük/H

Dış / Ext 240 x 600 mm
Paslanmaz / Stainless



ÇK-1805 Atık Kovası
Metal waste bin
En/W Yük/H

Dış / Ext 350 x 1000 mm
Paslanmaz / Stainless



www.hipas.com.tr



www.aboxplast.com

*Diğer Ürün Kataloglarımız
Our Other Product Catalogues*



Endüstriyel Ürünler Kataloğu
Industrial Products Catalog

www.hipas.com.tr



Çekmeceli kutu, Avadanlık ve Organizer
Drawers box, Stacking bins and Organizer

www.hipas.com.tr

İstanbul / Başakşehir

+90 212 968 23 23
satis@hipas.com.tr
Süleyman Demirel Bulvarı
23.Cadde Heskop San. Sit.
S.1 Blok Z.1-2 İkitelli Org. San.
Başakşehir - İSTANBUL / TÜRKİYE

İstanbul / Tuzla

satis@hipas.com.tr
Aydınlı Mahallesi
Yelken Sokak No:21
Tuzla - İSTANBUL / TÜRKİYE

Bursa

+90 212 968 23 23
satis@hipas.com.tr
Alaaddinbey Mah.
Ayfatma Cad. No.11 A/C
SAM.3 PLAZA B Blok
Nilüfer - BURSA / TÜRKİYE

Fabrika / Factory

satis@hipas.com.tr
Kabakoz OSB Mahallesi,
Kabakoz Osb. Mah.
No:9 Karasu Osb
Karasu/Sakarya / TÜRKİYE



Tüm yayın hakları saklıdır. Ürün katalogunda kullanılan fotoğrafların ve resimlerin tamamı yada bir bölümü izin almadan fotokopi, optik veya mekanik herhangi bir yolla kopyalanamaz çoğaltılamaz. Herhangi bir medya ortamında yayınlanamaz. All publishing rights are reserved. The photographs and illustrations used in the product catalogue may not be copied or reproduced in whole or in part by any means, including photocopy, optical or mechanical, without permission. They may not be published in any media.